



Sindhi High School-K K Road, Bengaluru-01
Annual Examination (2023-24)

English

Class : 7 A / B / C

Date : 18 / 03 / 2024

No of pages- 10

Writing time: 8.15-10.45 am

Marks : 80

Time : 2½ hrs

Reading Time: 8-8.15am

General Instructions:

- This paper contains two sections. All sections are compulsory.
Section A – Reading – 20 marks
Section B – Writing & Grammar – 20 marks.
Section C – Literature – 40 marks
- Read all the questions carefully.
- Attempt all questions.
- Write the correct question number for each answer

SECTION A- READING [20]

I. Read the given passage and answer the questions that follow:

[10]

1. Music is perhaps the most popular and widely practised form of Fine Arts, transcending all kinds of cultural and linguistic barriers. Any form of fine art is difficult to master and almost impossible to perfect and music is no exception.
2. Nature, it is learnt, has blessed almost two-thirds of the human race with musical ability of some sort. Music has the power to bring out the deepest emotions. It can make one cry or bring a smile on one's face. In fact, it is a magic medicine, and many seek refuge in it when they are depressed or stressed. It is this intimacy that makes us listen to music or even hum or sing sometimes. This singing, or realistically speaking, expressing one's emotion musically sometimes takes a serious turn. This desire to show musical expression in public then becomes a serious business profession. And from here the musical journey begins.
3. This desire to sing before an audience is innocent and beautiful and indeed it is perfectly alright to have such a genuine desire. But it is also important to understand that singing is an intricate art — a highly refined one at that, which requires systematic, prolonged and strict training, to be acceptable. This is an aspect we forget in our keen desire to reach the stage and perform. It is almost like preparing a formal meal for some specially invited guests, without even having learnt and trained in the basics of cooking. This is why we have more noise and less music nowadays.
4. These days almost everyone sings, and it does not stop here. Most of us want to become professional singers. Result: a complete disregard for and ignorance of the training part. This is because the need is never felt to go through training and the urge to get to the stage overcomes even a little desire to learn. If at all, somewhere along the way one feels the need to gain some knowledge and training, it leads to hurried shortcuts and half-hearted attempts, best described as 'Crash Courses'.
5. It is observed that those who have attained the so-called partial success, suddenly feel that they lack the required knowledge and are not learned enough. But it is too late by then. It should be understood here that the stage or a performance brings in a different mindset within the artist. It is always recommended and rightly said, that while on stage, cover the mistakes

and weaknesses if any, and get along. But the contrary is true when it comes to acquiring knowledge and during the learning process.

6. While under training, the student is expected to make mistakes but then rectify those mistakes under the supervision and guidance of the teacher. Therefore, it is good to make mistakes and then be corrected during the process of learning as this subsequently makes one flawless and educated. This is a different mindset. And these two mindsets discussed above, (those of a performer and that of a student) cannot co-exist.

[10]

Based on your understanding of the passage, answer the following questions:

1. What is stated about music in the passage?

- (a) It is an easy form of fine art.
- (b) It transcends cultural and linguistic barriers.
- (c) It is only appreciated by trained professionals.
- (d) It is not a popular form of fine art.

2. According to the passage, what is the power of music?

- (a) It has the power to bring out the deepest emotions.
- (b) It is only for those who are depressed or stressed.
- (c) It can only make people cry.
- (d) It is a magical cure for physical ailments.

3. Why does the passage mention the process of preparing a formal meal?

- (a) To emphasize the importance of learning the basics of cooking.
- (b) To discourage people from becoming professional singers.
- (c) To highlight the complexity of performing music on stage.
- (d) To promote the idea of quick and easy musical training.

4. What does the passage suggest about the trend of people wanting to become professional singers?

- (a) It is a positive development in the music industry.
- (b) It leads to a disregard for systematic training.
- (c) It results in a decline in the popularity of music.
- (d) It encourages thorough and prolonged training.

5. Complete the following statement as suggested in the passage:

Singing is an intricate art, a highly refined one at that because _____

- (a) it requires systematic, prolonged and strict training
- (b) it expresses our deepest emotions
- (c) it is a formal activity
- (d) it is innocent and beautiful

6. Nature has blessed almost two-thirds of the human race with some form of _____ ability.

- (a) Magical
- (b) Learning
- (c) Training
- (d) Musical

Find a word from the passage that means the same as: (i) Pure (ii) Complex

- (a) (i) intricate (ii) innocent
(b) (i) innocent (ii) intricate
(c) (i) prolonged (ii) partial
(d) (i) subsequent (ii) genuine

8. Which of the following facts is true about the power of music, as mentioned in the passage?

- A- The power of music lies in its ability to bring out deep emotions
B- It acts as a magic medicine for those who are depressed or stressed.
C- It transcends cultural barriers
D- It has an intimate connection with human emotions.

- (a) Only A is true
(b) Only C and D are true
(c) None of the above
(d) All the statements are true

9. What is the significance of making mistakes during the learning process, according to the passage? [Answer in 40-50 words] [2]

II. Read the given passage carefully and answer the questions that follow:

Each question carries 1 mark:

[10]

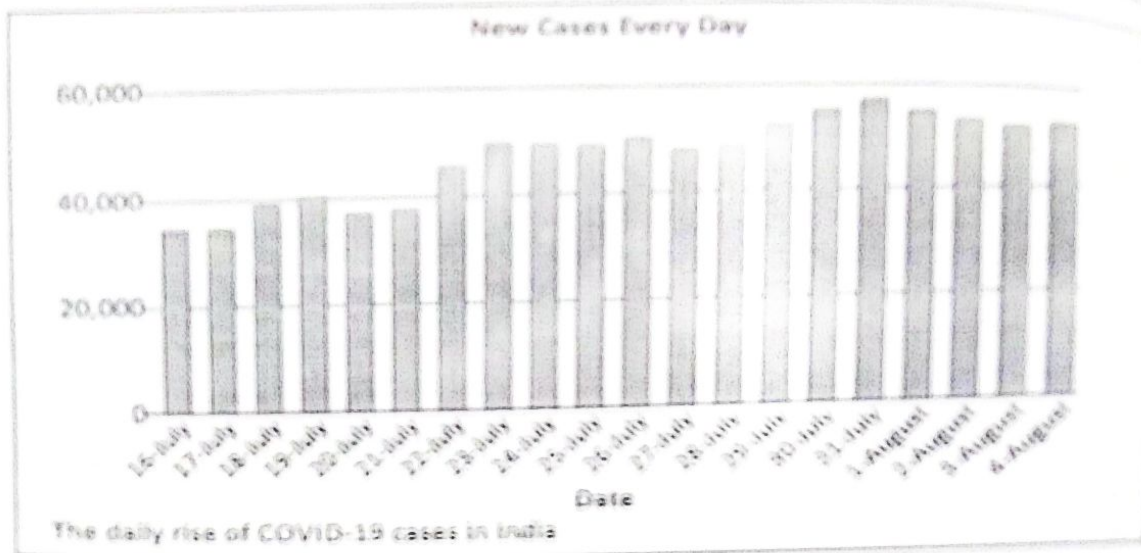
Passage 2:

1. With novel Coronavirus spreading rapidly all over the country, there are only three states Meghalaya, Sikkim, Andaman and Nicobar Islands, that have less than 1,000 people infected with the disease. Lakshadweep, of course, still hasn't reported even a single case till now, the only region in India entirely free of the epidemic.

2. Otherwise, even the relatively smaller states have a significantly large spread of the disease. Goa, for example, has seen more than 7,000 of its people infected by the virus by July 2020. Tripura has over 5,500 cases, while Manipur has more than 3,000, and Nagaland a little less than 2,500. Puducherry has more than 4,000 cases, while even Daman and Diu has over 1,300 people infected.

3. And in each of these states, the numbers are rising at a fast pace, at a rate higher than the national level. The infections had initially reached these states in the first and second week of May, when the lockdown was relaxed for the first time to enable people stuck in different parts of the country to return to their native places. After a period of very slow growth, the number of cases has begun to rise rapidly in one month. In Goa, for example, the total number of infected people has nearly doubled in the last week of July. Same has happened in Puducherry, as well.

4. Tuesday was one of those rare occasions when the number of active cases in the country, those who are yet to recover from the disease, went down compared to the previous day. That is because the number of recoveries, combined with the number of deaths, exceeded the new cases that were detected on Tuesday.



5. With over 52,500 new cases detected in the country, the total number of infections crossed 19 lakhs, out of which 12.82 lakh people have recovered from the disease. The number of dead is now close to 40,000. The number of recoveries on Tuesday was the highest-ever for a single day. More than 51,700 people were declared to have been recovered. Three days earlier, the number of recoveries had crossed 50,000 for the first time, but in the next two days the number had fallen to much lower levels.

Choose the correct option to answer the questions based on the above passage and graphics.

1. How are these three states – Meghalaya, Sikkim and Andaman and Nicobar Islands – different from the rest of India?

- (a) they are the only three states to have less than 1,000 people infected with novel coronavirus
- (b) they are three of the five states to have less than 1,000 people infected with novel coronavirus
- (c) they are the only states to have less than 2,000 people infected with novel coronavirus
- (d) none of these

2. _____ is the only region in India which is entirely free of the epidemic.

- (a) Andaman and Nicobar Islands
- (b) Maharashtra
- (c) Lakshadweep
- (d) Tripura

3. What is common among Goa, Tripura, Manipur, Nagaland, Puducherry and Daman and Diu?

- (a) the numbers are rising at a fast pace at rates lower than the national level
- (b) the numbers are falling at a fast pace at rates equal than the national level
- (c) the numbers are rising at a fast pace at rates higher than the national level
- (d) none of these

The infections had initially reached these states in the first and second week of May (paragraph 3).

'These states' refers to:

- (a) Meghalaya, Sikkim, Andaman and Nicobar Islands
- (b) Goa, Tripura, Manipur, Nagaland
- (c) Meghalaya, Sikkim, Andaman and Nicobar Islands and Lakshadweep
- (d) Puducherry, Daman and Diu

5. Which date in the graph shows the highest jump of detected cases in a day?

- (a) July 30
- (b) July 31
- (c) August 1
- (d) August 2

6. Of the 19 lakh infected cases, how many have recovered?

- (a) 11.82 lakh
- (b) 13.82 lakh
- (c) 12.81 lakh
- (d) 12.82 lakh

7. More than 51,700 people were declared to have been recovered on _____.

- (a) Wednesday
- (b) Sunday
- (c) Tuesday
- (d) Monday

8. When did the number of recoveries cross 50,000 for the first time?

- (a) two days earlier
- (b) Tuesday
- (c) three days earlier than Tuesday
- (d) none of these

9. Which word in the passage means the same as "quickly"?

- (a) rapidly
- (b) significantly
- (c) native
- (d) rare

10. Which word in the passage is similar in meaning to "indigenous"?

- (a) rapidly
- (b) significantly
- (c) native
- (d) rare

SECTION B- GRAMMAR AND WRITING [20]

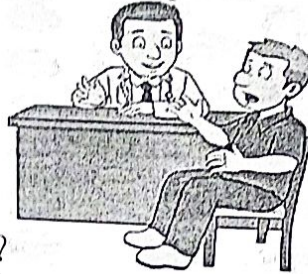
III. Complete the passage given below by choosing the correct alternatives:

1. Honey, amla, gums, resins, tubers and tamarinds; all these and more (i) _____ from forests and (ii) _____ their way into our lives. But the tribals who (iii) _____, dig and extract them get a pittance. Now the government (iv) _____ to provide a minimum support price for some select forest produce. This step could help some 40 million tribal farmers.

- (a) (i) come (ii) find (iii) plucks (iv) decides
- (b) (i) come (ii) have found (iii) pluck (iv) has decided
- (c) (i) came (ii) finds (iii) plucking (iv) will decide
- (d) (i) will come (ii) will find (iii) plucked (iv) deciding

2. Rewrite the given conversation in Indirect Speech:

[$\frac{1}{2} \times 2 = 1$]



Doctor: What is your problem?

Patient: I am suffering from a headache.

The doctor asked the patient (i) -----

The patient said that (ii) -----

- (a) (i) what is his problem.
(ii) I was suffering from a headache.
- (b) (i) what were his problem.
(ii) he is suffering from headache.
- (c) (i) what his problem was.
(ii) he was suffering from a headache.
- (d) (i) what is your problem?
(ii) he has suffered from a headache.

IV. Do as directed:

1. Ditya _____ (already/type) three pages when her computer _____ (crash) [1]
[Fill in the blanks with the correct form of verbs. Use helping verbs where needed]

2. The minister visited flood-affected area. [1]
(a) some (b) every (c) either (d) any
[Complete the given sentence with the suitable determiners]

3. ___ umbrella is ___ useful thing. [Fill in with suitable articles] [1]

4. My friend has one of the _____ cars on the road. (fast) [1]
[Choose the right form of adjective]

- 4 = 2]
- (a) Faster
 - (b) Fastest
 - (c) Fast
 - (d) Fasting

5. Shooting is just one part of the whole process (i) _____ making a film. The first important step is (ii) _____ decide what kind of story to make. [1]

- (a) (i) of (ii) to
- (b) (i) about (ii) for
- (c) (i) to (ii) with
- (d) (i) by (ii) to

6. **Editing:** Read the given lines. Identify the error in each line and supply the correction for the same in the given format [2]

	Error	Correction
Educationist today are overwhelmingly	(a) _____	_____
concern about the future of the youngsters	(b) _____	_____

V. As Mukul / Mahima of Alpine Public School, write a speech to be delivered in the school assembly highlighting the importance of cleanliness suggesting that cleanliness reflects the character of a person. (150-200 words) [5]

VI. You missed your Mathematics examination as you had a fracture. Write a letter to the Principal of your school seeking permission for a re-examination. Imagine you are Ashima/Ashish a student of National Model Public School, Anna Nagar, Chennai-600054 [5]

SECTION C- LITERATURE [40]

VII. Read the given extracts carefully and answer the questions that follow: [4]

Extract A.

"Dey get id all," he said, "dey get id by advertisement, nod by work. Dey take id away from us, who lofe our boods. Id gomes to dis— bresently I haf no work. Every year id gets less. You will see." And looking at his lined face I saw things I had never noticed before, bitter things and bitter struggle and what a lot of grey hairs there seemed suddenly in his red beard!

1. Identify the lesson and the author of the story.
- A. The above lines are extracted from the lesson:
- (a) Three Questions written by Leo Tolstoy
 - (b) Expert Detectives written by Sharada Dwivedi
 - (c) Quality written by John Galsworthy
 - (d) The Invention of Vita Wonk written by Roald Dahl

2. Who is the speaker of the above lines? What was his occupation?

A. The above lines were spoken by:

- (a) the salesman at the new shoe store
- (b) Mr Gessler, who was a passionate bootmaker
- (c) The narrator, a young businessman
- (d) Mr Gessler, who was an artist

3. Why does the speaker's English sound different?

- (a) Mr Gessler spoke in a heavy German accent
- (b) Mr Gessler was weak and frail
- (c) The narrator spoke in a heavy German accent
- (d) Mr Gessler had a fashionable accent

4. What is the speaker unhappy about? What was his complaint? [Answer in 30-40 words]

Extract B

[1×4=4]

"Fall?" scoffed Dad,
"A climber like me?
Child's play, this is!
You wait and see."

He got out the ladder
From the garden shed.
It slipped.
He landed In the flower bed.

1. Name the poem and the poet.

- (a) The Garden Snake written by Kit Wright
- (b) Meadow Surprises written by Kit Wright
- (c) Dad and the Cat and The Tree written by Kit Wright
- (d) The garden snake by Lois Brandt Phillips

2. Who is the speaker of the above lines?

The above lines were spoken by:

- (a) Mum
- (b) Dad
- (c) Cat
- (d) Children.

Why wa
nswer:
(a) he
(b) he

Why was Dad sure he wouldn't fall?

Answer: Dad was sure that he wouldn't fall because:

- (a) he thought of himself as a great climber
- (b) he had a ladder
- (c) he was climbing the steps
- (d) he had a harness to protect him

4. Why did the speaker want to climb the tree?

Answer: Dad wanted to climb the tree:

- (a) as he wanted to prove he was an expert climber
- (b) because he wanted to play on the swing
- (c) as he wanted to build a treehouse.
- (d) as he wanted to bring the cat down

VIII. Answer any 5 of the following in 20- 30 words:

[2×5=10]

1. Which of the hermit's answers do you like the most in the lesson, *Three Questions* and why?
2. What was the author's opinion about Mr Gessler as a bootmaker in the lesson *Quality*?
3. What trees does Mr Wonka mention in the lesson *The Invention of Vita Wonka*? Which tree does he say lives the longest?
4. What does the poet of *Meadow Surprises* refer to as 'meadow houses' ? What is amazing about the mounds of the ants?
5. "Now Abbu Khan understood Chandni's problem..." What was Chandni's problem in the story *Chandni*?
6. The bear grew up, but "he was a most amiable bear". Give any two instances from *The Bear Story* to prove this.

IX. Answer any 3 of the following in 40-50 words:

[4×3=12]

1. Why did Grandfather want Timothy to be put in another enclosure in the lesson, *A Tiger in the House*? What shocked Grandfather in the end?
2. Why did Tilloo and his family live under the surface of a planet, as mentioned in *An Alien Hand*?
3. How did Ananda feel after reading about the National War Memorial In the lesson *A Homage to Our Brave Soldiers*?
4. Compare and contrast the character of the Bear from *The Bear Story* with that of Timothy, the tiger from *A Tiger in the House*.

X. Answer the following in 80-100 words:

1. Shoot animals with a camera, not with a gun. Discuss with reference to the lesson

A Tiger in the House.

[2×5=10]

[5]

OR

“There was a time when our forefathers lived on the surface quite naturally. Indeed, they did so for millions of years. But times changed. The very sun, which had provided us with sustenance, turned hostile. It changed only slightly but the change was sufficient to upset the balance of nature on this planet. “First the birds became extinct. The animals followed. The fish couldn’t bear it anymore either.

With reference to the above lines from the lesson *An Alien Hand*, write a paragraph on why it is important to protect and conserve our natural resources.

2. *Some people might see a war memorial as just a monument, statue, an edifice to celebrate a war or victory and commemorate those who were martyred or injured in war. In my view, it is also an expression of deep gratitude for the supreme sacrifice made by our brave soldiers defending the sovereignty and integrity of the country.*

With reference to the above lines from the lesson, *A Homage to Our Brave Soldiers*, write a diary entry expressing your thoughts after visiting the National War Memorial in New Delhi. Discuss the importance and significance of paying homage to our soldiers and how it can inspire our youth.

[5]

OR

Nishad merely glared at me and quietly walked out of the room. My theories seemed to have made no impression on him at all.

Imagine yourself to be Maya from *The Expert Detectives*. You are upset that your theories about Mr Nath have failed to impress your brother. Write a diary entry expressing your thoughts on why you think Mr Nath is a criminal.

[5]



SINDHI HIGH SCHOOL, BENGALURU
ANNUAL EXAMINATION (2023-24)
SUBJECT - L2 KANNADA

Class: VII

Date: 26 /03/2024

Number of printed sides: 9

Marks: 80

Reading Time: 15 mins

Writing Time: 2 hrs 45 mins

ಸೂಚನೆಗಳು:

- ಈ ಪ್ರಶ್ನೆ ಪತ್ರಿಕೆಯಲ್ಲಿ ಒಟ್ಟು 15 ಮುಖ್ಯ ಪ್ರಶ್ನೆಗಳಿರುತ್ತವೆ.
- ಈ ಪ್ರಶ್ನೆ ಪತ್ರಿಕೆಯು ಭಾಗ - A ಮತ್ತು ಭಾಗ - B ಎಂಬ ಭಾಗಗಳನ್ನು ಮತ್ತು A B C D ಎಂಬ ನಾಲ್ಕು ವಿಭಾಗಗಳನ್ನು ಒಳಗೊಂಡಿರುತ್ತದೆ.
- ವಿಭಾಗ - A ನಲ್ಲಿ ಒಟ್ಟು 4 ಮುಖ್ಯ ಪ್ರಶ್ನೆಗಳು, 10 ಬಹು ಆಯ್ಕೆಯ ಉಪ-ಪ್ರಶ್ನೆಗಳು ಮತ್ತು ಬರವಣಿಗೆಯ 10 ಪ್ರಶ್ನೆಗಳಿರುತ್ತವೆ.
- ಭಾಗ - A ಅನ್ವಯಿಕ ವ್ಯಾಕರಣದಲ್ಲಿ 10 ಬಹು ಆಯ್ಕೆಯ ಪ್ರಶ್ನೆಗಳು, 5 ಬರವಣಿಗೆಯ ಪ್ರಶ್ನೆಗಳು ಮತ್ತು ಪಠ್ಯಪೂರಕದ 5 ಬಹು ಆಯ್ಕೆ ಪ್ರಶ್ನೆಗಳಿಗೆ ಉತ್ತರಿಸಬೇಕು.
- ಭಾಗ - B - (ಬರವಣಿಗೆಯ ಕೌಶಲ್ಯ) ವಿಭಾಗ C ನ ಎಲ್ಲಾ ಪ್ರಶ್ನೆಗಳಿಗೆ ಉತ್ತರಿಸಬೇಕು.
- ಭಾಗ - B (ಪಠ್ಯಗಳ ಅಧ್ಯಯನ) ಅಲ್ಲಿನ ವಿಭಾಗ - D ಯಲ್ಲಿಯ 11 ರಿಂದ 15 ಮುಖ್ಯ ಪ್ರಶ್ನೆಗಳಿಗೆ ಅಲ್ಲಿ ಕೊಟ್ಟಿರುವ ಸೂಚನೆಯಂತೆ ಉತ್ತರಿಸಬೇಕು.

ಭಾಗ-A (40 ಅಂಕಗಳು)	ವಾಚನ ಮತ್ತು ಗ್ರಹಿಕಾ ಕೌಶಲ್ಯ	20 ಅಂಕಗಳು
	ಅನ್ವಯಿಕ ವ್ಯಾಕರಣ	15 ಅಂಕಗಳು
	ಬಹು ಆಯ್ಕೆ ಪ್ರಶ್ನೆ- ಪಠ್ಯ ಪೂರಕ ಅಧ್ಯಯನ	05 ಅಂಕಗಳು
ಭಾಗ-B (40 ಅಂಕಗಳು)	ಬರವಣಿಗೆ ಕೌಶಲ್ಯ	12 ಅಂಕಗಳು
	ಪಠ್ಯಗಳ ಅಧ್ಯಯನ	28 ಅಂಕಗಳು
	ಒಟ್ಟು ಅಂಕಗಳು	80 ಅಂಕಗಳು

PART-A-(40 ಅಂಕಗಳು)

SECTION-A

(ವಾಚನ ಮತ್ತು ಗ್ರಹಿಕಾ ಕೌಶಲ್ಯ) 10 ಅಂಕಗಳು

I.ಕೆಳಗಿನ ಗದ್ಯ ಭಾಗವನ್ನು ಓದಿಕೊಂಡು ಕೊಟ್ಟಿರುವ ಪ್ರಶ್ನೆಗಳಿಗೆ ಉತ್ತರವನ್ನು ಆರಿಸಿ ಬರೆಯಿರಿ. 5X1=5

ದೀಪಾವಳಿ ಹಬ್ಬ ಮೂರು ದಿನಗಳ ಕಾಲ ಆಚರಿಸುವ ಹಬ್ಬ. ಮೊದಲ ದಿನ 'ಆಶ್ವಯುಜ ಬಹುಳ ಚತುರ್ದಶಿ'. ಆ ದಿನವನ್ನು ನರಕ ಚತುರ್ದಶಿ ಎಂದು ಕರೆಯುತ್ತಾರೆ. ಶ್ರೀ ಕೃಷ್ಣನು

ನರಕಾಸುರನನ್ನು ಕೊಂದು ಜಗತ್ತಿಗೆಲ್ಲ ಒಳಿತಾಗುವಂತೆ ಮಾಡಿದ ಅದರ ಸಂಕೇತವಾಗಿ 'ನರಕ ಚತುರ್ದಶಿ'ಯ ದಿನ ಬೆಳಗ್ಗೆ ಸಣ್ಣ ಮಕ್ಕಳಿಗೆಲ್ಲ ಆರತಿ ಮಾಡಿ ಎಣ್ಣೆ ಹಚ್ಚಿ ಅಭ್ಯಂಜನ ಸ್ನಾನ ಮಾಡಿಸುವರು ನಂತರ ಹೊಸ ಬಟ್ಟೆ ಹಾಕುವರು ಮೆರುದಿನ ಅಮಾವಾಸ್ಯೆ ಈ ಅಮಾವಾಸ್ಯೆಯನ್ನು ಶ್ರೇಷ್ಠ ಎಂದು ಕರೆಯುವರು ಅಂಗಡಿಗ ಹೋಟೆಲ್, ಕಚೇರಿ ಹೀಗೆ ವಿವಿಧ ವ್ಯಾಪಾರ - ವಹಿವಾಟು ನಡಸುವವರಲ್ಲ ದೀಪಾವಳಿ ಅಮಾವಾಸ್ಯೆಯ ಸಾಯಂಕಾಲ ಲಕ್ಷ್ಮಿ ಪೂಜೆಯನ್ನು ಮಾಡುವರು 'ಲಕ್ಷ್ಮಿದೇವಿಯ ಆಶೀರ್ವಾದದಿಂದ ತಮ್ಮ ವ್ಯಾಪಾರ ವಹಿವಾಟು ಚೆನ್ನಾಗಿ ನಡೆದು ತಮಗೆ ಲಾಭ ದೊರೆಯಲಿ' ಎಂದು ದೇವಿಯನ್ನು ಪ್ರಾರ್ಥಿಸುತ್ತಾರೆ ಅದರ ಮಾರನೆಯ ದಿನ 'ಕಾರ್ತಿಕ ಶುದ್ಧ ಪಾಡ್ಯ' ದಂದು 'ಬಲಿಪಾಡ್ಯಮಿ' ಅಂದು ಬಲಿ ಚಕ್ರವರ್ತಿ ಭೂಲೋಕಕ್ಕೆ ಬಂದು ತನ್ನ ಪುತ್ರಗಳೆಲ್ಲ ಸುಖವಾಗಿರುವರೆ ಎಂದು ನೋಡುತ್ತಾನೆಂಬ ನಂಬಿಕೆ ಆದ್ದರಿಂದ ಆ ದಿನ ಬೆಳಗ್ಗೆ ಅಂಗಳವನ್ನೆಲ್ಲ ಸಾರಿಸಿ ರಂಗೋಲಿಗಳಿಂದ ಅಲಂಕರಿಸುತ್ತಾರೆ

ಬಲಿಪಾಡ್ಯಮಿ ದಿನದಂದು ಹಸುಗಳಿಗೆ ಸಿಂಗಾರ ಮಾಡಿ ವಿಶೇಷವಾದ ಪೂಜೆ ಮಾಡುತ್ತಾರೆ ಇದನ್ನು 'ಗೋಪೂಜೆ' ಎಂದು ಕರೆಯುತ್ತಾರೆ ಆ ದಿನ ಸಂಜೆ ಗೋವುಗಳಿಂದ ಕಿಚ್ಚನ್ನು ಹಾಯಿಸುತ್ತಾರೆ ಅಂದರೆ ಊರಿನ ಒಂದು ಭಾಗದಲ್ಲಿ ಕಟ್ಟಿಗೆಗಳಿಂದ ಬೆಂಕಿಯ ಉರಿಯನ್ನು ಹಾಕಿರುತ್ತಾರೆ ಅಲ್ಲಿಗೆ ಹಳೆಯವರು ತಮ್ಮ ತಮ್ಮ ಜಾನುವಾರಗಳನ್ನು ಕರೆದು ತರುತ್ತಾರೆ ನಂತರ ತಮ್ಮ ಜಾನುವಾರುಗಳು ಓಡಿಹೋಗಿ ಬೆಂಕಿಯ ಉರಿಯನ್ನು ದಾಟುವಂತೆ ಮಾಡುತ್ತಾರೆ ಇದರಿಂದ ಜಾನುವಾರುಗಳಿಗೆ ಆಗುವ ತೊಂದರೆಗಳನ್ನು ತಪ್ಪಿಸಬಹುದು ಎನ್ನುವುದು ನಮ್ಮ ಹಳೆ ಜನರ ನಂಬಿಕೆ ಮೂರು ದಿನಗಳ ಮಕ್ಕಳು ಉತ್ಸಾಹದಿಂದ ಸುರುಸುರುಬತ್ತಿ ಹೊಲಾಣಿ ಪಟಾಕಿಯನ್ನು ಹೊಡೆದು ಸಂತೋಷ ಪಡುತ್ತಾರೆ ಪಟಾಕಿ ಹೊಡೆಯುವ ಸಂದರ್ಭದಲ್ಲಿ ಆಡಪ್ಪೂ ಮಕ್ಕಳು ಎಚ್ಚರಿಕೆಯಿಂದ ಇರಬೇಕು ದೊಡ್ಡವರ ಎದುರಿನಲ್ಲಷ್ಟೇ ಪಟಾಕಿಯನ್ನು ಹೊಡೆಯಬೇಕು ಇದರಿಂದ ಅನಾಹುತಗಳನ್ನು ತಪ್ಪಿಸಬಹುದು

ಪ್ರಶ್ನೆಗಳು

1. ಆಶ್ವಯುಜ ಬಹುಳ ಚತುರ್ದಶಿ ದಿನವನ್ನು _____ ಎಂದು ಕರೆಯುತ್ತಾರೆ
 A ನರ ಚತುರ್ದಶಿ B ಬಲಿ ಚತುರ್ದಶಿ C ಕೃಷ್ಣ ಚತುರ್ದಶಿ D ನರಕ ಚತುರ್ದಶಿ
2. ದೀಪಾವಳಿಯ ಅಮಾವಾಸ್ಯೆಯ ಸಾಯಂಕಾಲ _____ ಪೂಜೆಯನ್ನು ಮಾಡುತ್ತಾರೆ
 A ಸರಸ್ವತಿ B ಲಕ್ಷ್ಮಿ C ಪಾರ್ವತಿ D ಬುಧಿ
3. ಬಲಿಪಾಡ್ಯಮಿ ದಿನದಂದು _____ ಭೂಲೋಕಕ್ಕೆ ಬಂದು ತನ್ನ ಪುತ್ರಗಳು ಸುಖವಾಗಿ ಇರುವರೆ ಎಂದು ನೋಡುತ್ತಾನೆ
 A ಬಲಿ ಚಕ್ರವರ್ತಿ B ನರಕಾಸುರ C ಲಕ್ಷ್ಮಿ D ಶಿವ

2. ಬೃಹದ್ರಥನ ಅರಮನೆಗೆ _____ ಮುಷಿಗಳು ಬಂದರು.

- A. ಚಂಡ ಕೌಶಿಕ B. ವಿಶ್ವಾಮಿತ್ರ C. ಕಶ್ಯಪ D. ಜಮದಗ್ನಿ

3. ಮುಷಿಗಳು ಕೊಟ್ಟ ಹಣ್ಣನ್ನು ರಾಜನು _____ ಭಾಗ ಮಾಡಿದನು.

- A. ನಾಲ್ಕು B. ಮೂರು C. ಐದು D. ಎರಡು

4. ರಾಜನ ಆದೇಶದಂತೆ ಸೇವಕರು ಅರ್ಧ ಶರೀರಗಳನ್ನು _____ ಬಿಸಾಡಿ ಬಂದರು.

- A. ನದಿಯಲ್ಲಿ B. ಕಾಡಿನಲ್ಲಿ C. ರಸ್ತೆಯಲ್ಲಿ D. ಕಸದಲ್ಲಿ

5. 'ಜರಾ'ಳು ಆ ಶರೀರವನ್ನು ಕೂಡಿಸಿದ್ದರಿಂದ _____ ಎಂಬ ಹೆಸರು ಬಂತು.

- A. ಜಲಸಂಧ B. ಜರಾಸಂಧ C. ಜಗಸಂದು D. ಜಡಸಂಧ

III. ಈ ಕೆಳಗೆ ಕೊಟ್ಟಿರುವ ಪರಿತ ಗದ್ಯಭಾಗ 'ಅಂತಿಮ ವಿದಾಯ' ಪಾಠವನ್ನು ಓದಿಕೊಂಡು ಅದರ ಕೆಳಗೆ ಕೊಟ್ಟಿರುವ ಪ್ರಶ್ನೆಗಳಿಗೆ ಸರಿಯಾದ ಉತ್ತರವನ್ನು ಬರೆಯಿರಿ. 5X1=5

ಆ ವೈದ್ಯನ ನಡೆಯಲ್ಲಿ ಧಾವಂತವಿತ್ತು. ರೋಗಿಯೊಬ್ಬನನ್ನು ಉಳಿಸಲು ತನ್ನಿಂದಾಗಿ ತಡವಾಗುತ್ತಿದೆಯಲ್ಲಾ ಎಂಬ ತಳಮಳವಿತ್ತು. ನರ್ಸ್ ಳಿಂದ ಫೋನ್ ಬರುತ್ತಿದ್ದಂತೆ ಆಸ್ಪತ್ರೆಗೆ ದೌಡಾಯಿಸಿದ್ದ.

ತನ್ನ ರೂಮಿಗೆ ಹೋದವನೇ ಶಸ್ತ್ರ, ಚಿಕಿತ್ಸೆಯ ಸಮವಸ್ತ್ರ, ಧರಿಸಿ ಆಪರೇಷನ್ ಥಿಯೇಟರ್ ನತ್ತ ಹೆಜ್ಜೆ ಹಾಕಿದ್ದ. ಕೊಠಡಿಯ ಮುಂದೆ ಒಬ್ಬ ತಂದೆ ಶತಪಥ ಹೆಜ್ಜೆ ಹಾಕುತ್ತಿದ್ದಾನೆ. ಒಳಗೆ ಮಲಗಿರುವ ತನ್ನ ಮಗನಿಗೆ ಏನಾಗಿಬಿಡುತ್ತೋ, ಮತ್ತೆ ಆತನನ್ನು ಜೀವಂತವಾಗಿ ನೋಡುತ್ತೇನೋ ಇಲ್ಲವೋ ಎಂಬ ಆತಂಕ ಅವನನ್ನು ಕಿತ್ತು ತಿನ್ನುತ್ತಿದೆ. ಮುಖದಲ್ಲಿ ಅಸಹನೆ ತಾಂಡವಾಡುತ್ತಿದೆ. ಆಪರೇಷನ್ ಥಿಯೇಟರ್ ನತ್ತ ದೌಡಾಯಿಸುತ್ತಿರುವ ವೈದ್ಯನನ್ನು ಕಾಣುತ್ತಿದ್ದಂತೆಯೇ ಅವನಲ್ಲಾ ಅಸಹನೆಯ ಕಟ್ಟಿಯೊಡೆಯಿತು. "ಇಲ್ಲಿಗೆ ಬರುವುದಕ್ಕೆ ನಿಮಗೆ ಇಷ್ಟೊತ್ತು ಬೇಕಾಯಿತೆ"? ನನ್ನ ಮಗನ ಜೀವ ಅಪಾಯದಲ್ಲಿದೆ ಎಂಬುದು ನಿಮಗೆ ಗೊತ್ತಿಲ್ಲವೇ? ನಿಮಗೆ ಕಿಂಚಿತ್ತಾದರೂ ಜವಾಬ್ದಾರಿ ಎನ್ನುವುದಿಲ್ಲವೇ? ತನ್ನೆಲ್ಲ ಆಕ್ರೋಶಕ್ಕೆ ಮಾತಿನ ರೂಪ ಕೊಟ್ಟು ವೈದ್ಯನ ಮೇಲೆ ಹರಿ ಹಾಯ್ದು.

"ದಯವಿಟ್ಟು ಕ್ಷಮಿಸಿಪ್ಪ. ನಾನು ಆಸ್ಪತ್ರೆಯಲ್ಲಿ ಇರಲಿಲ್ಲ. ನನಗೆ ಫೋನ್ ಬರುತ್ತಿದ್ದಂತೆಯೇ ಹೊರಟು ಬಂದಿದ್ದೇನೆ. ದಯಮಾಡಿ ನೀನೀಗ ಸ್ವಲ್ಪ ಶಾಂತನಾಗು ನನ್ನ ಕೆಲಸ ಮಾಡಲು ಅನುವು ಮಾಡಿಕೊಡು. ಈಗಾಗಲೇ ತಡವಾಗಿ ಹೋಗಿದೆ." ಕ್ಷಮೆಯ ನಗುವಿನೊಂದಿಗೆ ವೈದ್ಯ ವಿನಂತಿಸಿಕೊಂಡ.

"ಶಾಂತನಾಗೋದ ? ಒಂದೊಮ್ಮೆ ನಿನ್ನ ಮಗ ಇದೇ ಆಪರೇಷನ್ ಕೊಠಡಿಯಲ್ಲಿ ಈ ಪರಿಸ್ಥಿತಿಯಲ್ಲಿ ಮಲಗಿದ್ದರೆ ನೀನು ಶಾಂತನಾಗಿರುತ್ತಿದ್ದೆಯಾ? ವೈದ್ಯ ಬರುವುದು ತಡವಾಗಿ ನಿನ್ನ ಮಗ ಸತ್ತು ಹೋದರೆ ನೀನೇನು ಮಾಡುತ್ತಿದ್ದೆ?" ತಂದೆಯ ಅಕ್ರೋಶಕ್ಕೆ ಕೊನೆಯಿದ್ದಂತೆ ಕಾಣಲಿಲ್ಲ.

ವೈದ್ಯ ಮತ್ತೆ ಕ್ಷಮೆಯಾಚಿತ ನಗುವಿನೊಂದಿಗೆ ಉತ್ತರಿಸಿದ "ಒಬ್ಬ ವೈದ್ಯನಾಗಿ ನಾನು ಏನು ಮಾಡಬಲ್ಲೆನೋ ಅದನ್ನು ಪ್ರಾಮಾಣಿಕವಾಗಿ ಮಾಡುತ್ತೇನೆ. ನಿನ್ನ ಮಗನನ್ನು ಉಳಿಸಲು ನನ್ನೆಲ್ಲಾ ಸಾಮರ್ಥ್ಯವನ್ನು ಪಣಕ್ಕಿಡುತ್ತೇನೆ. ಆದರೂ ನಮ್ಮೆಲ್ಲ ಮೀರಿದ ಶಕ್ತಿಯ ಮುಂದೆ ನಮ್ಮ

ಆಟವೇನೂ ನಡೆಯದು. ವೈದ್ಯರಾದವರು ಸಾವನ್ನು ಮುಂದೂಡಬಹುದೇ ವಿನಾ ಸಾವಿನಿಂದ ಸಂಪೂರ್ಣವಾಗಿ ಬಚಾವು ಮಾಡುವ ಶಕ್ತಿ ನಮಗೂ ಇಲ್ಲ. ಈಗ ಹೋಗಿ ಆ ದೇವರ ಬಳಿ ನಿನ್ನ ಮಗನನ್ನು ಉಳಿಸಿ ಕೊಡುವಂತೆ ಬೇಡಿಕೋ. ನನಗೆ ನನ್ನ ಕೆಲಸ ಮಾಡಲು ಬಿಡು”.

ಪ್ರಶ್ನೆಗಳು

1. ವೈದ್ಯನ ನಡಿಗೆಯಲ್ಲಿ ಏನಿತ್ತು ?
2. ಆಪರೇಷನ್ ಕೊಠಡಿಯ ಬಳಿಯಿದ್ದ ಯಾರ ಮುಖದಲ್ಲಿ ಆತಂಕವಿತ್ತು ?
3. ವೈದ್ಯರಿಗೆ ಫೋನ್ ಮಾಡಿದವರು ಯಾರು ?
4. ರೋಗಿಯ ತಂದೆಯು ಯಾರ ಮೇಲೆ ಹರಿಹಾಯ್ತನು ?
5. ವೈದ್ಯರಾದವರು ಏನನ್ನು ಮುಂದೂಡಬಹುದು ?

IV. ಈ ಕೆಳಗೆ ಕೊಟ್ಟಿರುವ ಎಚ್. ದುಂಡಿರಾಜ್ ಬರೆದಿರುವ 'ಈ ನೆಲ ಈ ಜಲ' ಪರಿತ ಪದ್ಯ ಭಾಗವನ್ನು ಓದಿಕೊಂಡು, ಅದರ ಕೆಳಗೆ ಕೊಟ್ಟಿರುವ ಪ್ರಶ್ನೆಗಳಿಗೆ ಸರಿಯಾದ ಉತ್ತರವನ್ನು ಬರೆಯಿರಿ.

5X1=5

ಈ ನೆಲ ಈ ಜಲ ಈ ಕಾಡು
ಗೀಜಗ ಕಟ್ಟಿದ ಈ ಗೂಡು
ಇರಲಿ ಇರಲಿ ಹೀಗೆ ಪ್ರಕೃತಿ ಕೊಟ್ಟ ಕೊಡುಗೆ.

ಜುಳು ಜುಳು ಹರಿವ ಹೊಳೆಗೆ
ಕೊಳೆಯ ಬೆರಸೊ ಖಳರೇ
ಬಗೆ ಬಗೆ ಹೊಗೆಯನು ಉಗುಳಿ
ಮಲಿನಗೊಳಿಸದಿರಿ ಗಾಳಿ
ಸಾಕು ಇನ್ನು ಸಾಕು ಈ ತಪ್ಪ ತಿದ್ದಬೇಕು.

ಮರಗಳ ಕಡಿದು ಕಡಿದು ಎಲ್ಲೆಡೆ ಭಣಭಣ ಬಿಸಿಲು
ಚಿಲಿಪಿಲಿ ಉಲಿವ ಹಕ್ಕಿ
ಅಳುತಿದೆ ಬಿಕ್ಕಿ ಬಿಕ್ಕಿ
ಸಾಕು ಇನ್ನು ಸಾಕು ಹಸಿರಾಗಬೇಕು ಬದುಕು.

ರಕ್ಷಿಸಬೇಕು ಬಿಡದೇ
ನಮ್ಮ ನೆಲಜಲಗಳ ನಾವು
ನಾಳಿನ ಪೀಳಿಗೆಗಾಗಿ
ಉಳಿಸಿರಿ ನಾಡಿನ ಚೆಲುವು
ಸಿರಿನಾಡ ಚೆಲುವು ಈ ಕರುನಾಡ ಚೆಲುವು.

ಪ್ರಶ್ನೆಗಳು

1. ನಮಗೆ ಈ ನೆಲ, ಜಲ, ಕಾಡುಗಳು ಯಾರು ಕೊಟ್ಟ ಕೊಡುಗೆಗಳಾಗಿವೆ ?
2. ಹೊಳೆಯ ನೀರು ಮಲಿನವಾಗಲು ಕಾರಣವೇನು?

3. ಗಾಳಿಯನ್ನು ಹೇಗೆ ಮಲಿನಗೊಳಿಸಿದ್ದೇವೆ ?
4. ಚಿಲಿಪಿಲಿ ಉಲಿವ ಹಕ್ಕಿ ಹೇಗೆ ಅಳುತ್ತಿದೆ ?
5. ನಾವು ಯಾರಿಗಾಗಿ ನೆಲ ಜಲಗಳನ್ನು ರಕ್ಷಿಸಬೇಕು?

SECTION-B

(ಅನ್ವಯಿಕ ವ್ಯಾಕರಣ ಮತ್ತು ಪಠ್ಯಪೂರಕ ಅಧ್ಯಯನ) = 20 ಅಂಕಗಳು
 V. ಕೆಳಗಿನ ಪ್ರತಿಯೊಂದು ಪ್ರಶ್ನೆಗೆ ನಾಲ್ಕು ಉತ್ತರಗಳನ್ನು ಕೊಡಲಾಗಿದೆ ಅವುಗಳಲ್ಲಿ ಸರಿಯಾದ ಉತ್ತರವನ್ನು ಆರಿಸಿ ಬರೆಯಿರಿ.

1x10=10

1. 'ಬಂಡಾಯ' ಈ ಪದದ ಸಮಾನಾರ್ಥಕ ಪದ :
 A. ದಂಗೆ B. ಬಂಡಿ C. ಹಿಮ್ಮುಖ D. ಬೆದರಿಕೆ
2. 'ಶಾಸಕ' ಪದದ ಅನ್ಯ ಲಿಂಗ ರೂಪ:
 A. ಸದಸ್ಯ B. ಸ್ನೇಹಿತ C. ಶಾಸನ D. ಶಾಸಕಿ
3. 'ಶಾಂಭವಿ ಮಧುರವಾಗಿ ಹಾಡುತ್ತಾಳೆ'. ಈ ವಾಕ್ಯವು ಸೂಚಿಸಿರುವ ಕಾಲ :
 A. ಭವಿಷ್ಯ ಕಾಲ B. ಬೇಸಿಗೆಕಾಲ C. ವರ್ತಮಾನ ಕಾಲ D. ವಸಂತಕಾಲ
4. 'ನದಿಯು' ಈ ಪದದಲ್ಲಿರುವ ವಿಭಕ್ತಿ ಗುರುತಿಸಿ:
 A. ಪ್ರಥಮಾ B. ದ್ವಿತೀಯಾ C. ತೃತೀಯಾ D. ಚತುರ್ಥಿ
5. ದೇವಾಲಯದಲ್ಲಿ ಪೂಜಾರಿಯು ಪೂಜೆ ಮಾಡುತ್ತಿದ್ದಾನೆ. ಈ ವಾಕ್ಯದಲ್ಲಿನ ಅನ್ವರ್ಥನಾಮವನ್ನು ಗುರುತಿಸಿ ಬರೆಯಿರಿ.
 A. ದೇವಾಲಯದಲ್ಲಿ B. ಮಾಡುತ್ತಿದ್ದಾನೆ C. ಪೂಜೆ D. ಪೂಜಾರಿಯು
6. 'ಅಂತಿಮ' ಈ ಪದದ ವಿರುದ್ಧ ಪದ:
 A. ಕೊನೆಗೊಳ್ಳು B. ಆರಂಭ C. ಅತಿಥಿ D. ಅಂತ್ಯ
7. ಹಾಡುತ್ತಾಳೆ. ಈ ಪದದ ಧಾತುರೂಪವನ್ನು ಬರೆಯಿರಿ.
 A. ಹಾಡಿ B. ಆಡು C. ಹಾಡು D. ಹಾಡುತ್ತಾ
8. 'ಬಂಧು' ಈ ಪದದ ಬಹುವಚನ ರೂಪ
 A. ಬಂಧುಗಳು B. ಬಂಧನ C. ಬಾಂಧವರು D. ಬಳಗ
9. ಆಳಾಗಿ ದುಡಿ _____ -ಈ ಗಾದೆಯನ್ನು ಪೂರ್ಣಗೊಳಿಸು ಮುಂದಿನ ಭಾಗ
 A. ಸುಖವಾಗಿರು B. ಹಾಳಾಗಿ ಹೋಗು C. ಅರಸನಾಗಿ ಉಣ್ಣು D. ಶ್ರೀಮಂತನಾಗು
10. ತಂದವು - ಈ ಪದದ ಪ್ರಾಸಪದ ಇದು
 A. ಎಂದಿತು B. ತಂದಿದ್ದು C. ಬಂದಿತು D. ಬಂದವು

VI. ಸೂಚನೆಯಂತೆ ಸರಿಯಾಗಿ ಬರೆಯಿರಿ.

5X1=5

1. 'ಕಲರವ' (ಈ ಪದವನ್ನು ನಿಮ್ಮ ಸ್ವಂತ ವಾಕ್ಯದಲ್ಲಿ ಬಳಸಿ ಬರೆಯಿರಿ)
2. 'ಬಂದುಂಡು' (ಈ ಪದವನ್ನು ಬಿಡಿಸಿ ಸಂಧಿಯನ್ನು ಹೆಸರಿಸಿ)
3. ಆಗೈತಿ, ಬ್ಯಾಡ (ಈ ಪದಗಳನ್ನು ಗ್ರಾಂಥಿಕ ರೂಪದಲ್ಲಿ ಬರೆಯಿರಿ)
4. ಈಗೀಗ ನಮ್ಮ ದೇಶದಲ್ಲಿ ರೋಗ - ರುಜಿನಗಳು ಹೆಚ್ಚಾಗುತ್ತಿವೆ. (ಈ ವಾಕ್ಯದಲ್ಲಿನ ದ್ವಿರುಕ್ತಿ ಮತ್ತು ಜೋಡಿ ಪದಗಳನ್ನು ಗುರುತಿಸಿ ಬರೆಯಿರಿ)
5. ಬ್ರಿಟಿಷರ ಅನ್ಯಾಯ ಅಕ್ರಮ ಅಮಾನವೀಯ ನಡನುಡಿಗಳ ವಿರುದ್ಧ ಹೋರಾಟ ನಡೆಯಿತು (ಈ ವಾಕ್ಯಕ್ಕೆ ಸೂಕ್ತ ಲೇಖನ ಚಿಹ್ನೆಗಳನ್ನು ಬಳಸಿ ಬರೆಯಿರಿ)

VII. ಕೆಳಗಿನ ಪ್ರತಿಯೊಂದು ಪ್ರಶ್ನೆಗೂ ನಾಲ್ಕು ಉತ್ತರಗಳನ್ನು ಕೊಡಲಾಗಿದೆ ಅವುಗಳಲ್ಲಿ ಸರಿಯಾದ ಉತ್ತರವನ್ನು ಆರಿಸಿ ಬರೆಯಿರಿ.

5X1=5

1. ಊರ ಜನರ ದೈನಂದಿನ ಚಟುವಟಿಕೆ ಪ್ರಾರಂಭವಾಗುವುದು ಗುಡಿಯಲ್ಲಿಯು _____ ದರ್ಶನದಿಂದ.

- A. ಗ್ರಾಮದ B. ಮೂರ್ತಿಯು C. ಧನದ D. ಶಾಲೆಯು

2. ಮೊದಲು ಅಥರ್ಗಾ ಗ್ರಾಮವು ಒಂದು _____ ತವರಾಗಿತ್ತು.

- A. ಅನಕ್ಷರಸ್ಥರ B. ಬುದ್ಧಿವಂತರ C. ದಡ್ಡರ D. ಅಕ್ಷರಸ್ಥರ

3. ರೇವಣ್ಣ ಸಿದ್ಧಪ್ಪ ಮಾಸ್ತರರು ಮಾಡಿದ ಕಾರ್ಯ ಚಟುವಟಿಕೆಯಿಂದ ಗ್ರಾಮ _____ ಗ್ರಾಮವಾಯಿತು.

- A. ಮಾದರಿ B. ಅಕ್ಷರಸ್ಥ C. ಸಮಾನತೆ D. ಬೆಳಕು

4. ಊರ ಮಧ್ಯದಲ್ಲಿ ಈ ಸಮಾಜಮುಖಿ ಮಾಸ್ತರಿಗೆ _____ ಕಟ್ಟಿಸಿದರು.

- A. ಶಾಲೆ B. ಮನೆ C. ಗುಡಿ D. ಚರ್ಚ್

5. ಮಾಸ್ತರಿಗಾಗಿ ಪ್ರತಿ ವರ್ಷ ಶಿವರಾತ್ರಿಯಂದು _____ ನಡೆಯುತ್ತದೆ.

- A. ಅಭಿಷೇಕ B. ಜಾತ್ರೆ C. ಆರಾಧನೆ D. ಸೇವೆ

PART-B-(40 ಅಂಕಗಳು)

SECTION-C

(ಬರವಣಿಗೆ ಕೌಶಲ್ಯ)-12 ಅಂಕಗಳು

VIII. ನೀವು ನಿಮ್ಮ ಊರಿನಲ್ಲಿ ನಡೆಯುತ್ತಿರುವ ಜಾತ್ರೆಗೆ ನಿಮ್ಮ ಗೆಲೆಯ/ಗೆಲತಿಯನ್ನು ಆಹ್ವಾನಿಸಿ ಒಂದು ಪತ್ರ ಬರೆಯಿರಿ.

1X4=4

IX. ಸುಳಿವುಪದಗಳ ಸಹಾಯದಿಂದ ಕೆಲಗೆ ಕೊಟ್ಟಿರುವ ಕಥೆಯನ್ನು ಪೂರ್ಣಗೊಳಿಸಿ.

$\frac{1}{2} \times 8 = 4$

ಸುಳಿವು ಪದಗಳು: ರಟ್ಟಿನ , ಪ್ರೀತಿ , ಅಕ್ಕಿ , ಗರಿಗಳನ್ನು, ಗೆಲೆಯ , ಸಂತಸ , ಹಕ್ಕಿಗಳಿಗೆ , ನೀರು, ಜೀವಿತಳಿಗೆ ಪಕ್ಕಿಗಳೆಂದರೆ ಬಲು _____ ಅವರ ಮನೆಯ ಸುತ್ತ ಹತ್ತಾರು ಜಾತಿಯ

ಪಕ್ಷಿಗಳು ನಲಿದಾಡುತ್ತಿದ್ದವು. ಪಕ್ಷಿಗಳಿಗೆ ಅನುಕೂಲವಾಗುವಂತೆ _____ ಪೆಟ್ಟಿಗೆಗಳನ್ನು
ಮನೆಯ ಸೂರಿನ ಸುತ್ತ ಮುತ್ತ ಕಟ್ಟಿದಳು. ಇವಳ ಈ ಕೆಲಸಕ್ಕೆ ಅವಳ ಅಣ್ಣನೂ ಸಹಾಯ ಮಾಡಿದನು.
ಅಮ್ಮನಿಂದ _____ ರಾಗಿ, ಜೋಳ, ಗೋಧಿ ಕಾಳುಗಳನ್ನು ಪಡೆದು _____ ಕಾಣುವಂತೆ
ತಟ್ಟಿಯೊಂದರಲ್ಲಿ ಇಟ್ಟಳು. ಕುಡಿಯುವುದಕ್ಕಾಗಿ ಬಟ್ಟಲಲ್ಲಿ ನೀರನ್ನು ಇಟ್ಟಳು. ಹಕ್ಕಿಗಳು ಕಾಳು
ತಂದು _____ ಕುಡಿಯುವುದನ್ನು ನೋಡಿ ಸಂತಸ ಪಟ್ಟಳು. ರಟ್ಟಿನ ಪೆಟ್ಟಿಗೆಯಲ್ಲಿ ಗುಬ್ಬಿಗಳು ಹುಲ್ಲಿನ
_____ ತಂದು ಗೂಡನ್ನು ಕಟ್ಟಿದವು. ಕೆಲವೇ ದಿನಗಳಲ್ಲಿ ಗೂಡಿನಲ್ಲಿ ಮರಿಗಳ ಚಿಲಿಪಿಲಿ ದನಿ
ಕೇಳಿಸಿತು. ಜೀವಿತ ತನ್ನ _____ ಗೆಳತಿಯರನ್ನು ಕರೆದುಕೊಂಡು ಬಂದು ಪಕ್ಷಿಗಳನ್ನು ಎಲ್ಲರಿಗೂ
ತೋರಿಸಿ, ಅವರ ಬಗ್ಗೆ _____ ವಿವರಣೆ ನೀಡಿದಳು.

X. ಕೆಳಗೆ ಕೊಟ್ಟಿರುವ ವಿಷಯಗಳಲ್ಲಿ ಯಾವುದಾದರೂ ಒಂದು ವಿಷಯವನ್ನು ಕುರಿತು
ವಾಕ್ಯಗಳಲ್ಲಿ ಪ್ರಬಂಧ ಬರೆಯಿರಿ.

1x4=4

1. ಆರೋಗ್ಯವೇ ಭಾಗ್ಯ
2. ಶಾಲೆಯಲ್ಲಿ ಸಮವಸ್ತ್ರದ ಪ್ರಾಮುಖ್ಯತೆ
3. ಮಾತೃಭಾಷೆಯ ಮಹತ್ವ

SECTION -D

(ಪಠ್ಯಗಳ ಅಧ್ಯಯನ) 28 ಅಂಕಗಳು

XI. ಈ ಕೆಳಗಿನ ಪ್ರಶ್ನೆಗಳಿಗೆ ಎರಡು-ಮೂರು ವಾಕ್ಯಗಳಲ್ಲಿ ಉತ್ತರಿಸಿ.

4X2=8

1. ಅತ್ತಿಮಬ್ಬೆಯ ವಿವಾಹದ ಸಂದರ್ಭದಲ್ಲಿ ಬಂಧು ಮಿತ್ರರಿಗೆ ಏನನ್ನು ಉಡುಗೊರೆಯಾಗಿ ನೀಡಲಾಯಿತು?
2. ಕೊಳದಲ್ಲಿನ ಆಮೆಗೆ ಯಾವ ಆಸೆ ಮೂಡಿತು ? ಆಮೆ ಹಂಸಗಳ ಸಂಗವನ್ನು ಏಕೆ ಬೆಳೆಸಿತು ?
3. ಬ್ರಿಟಿಷ್ ಅಧಿಕಾರಿ ಭೀಮರಾಯನ ಶಕ್ತಿ ಸಾಮರ್ಥ್ಯಗಳ ಬಗ್ಗೆ ಏನೆಂದು ಹೇಳಿದನು ?
4. ತನ್ನನ್ನು ತಾನು ಅರಿಯುವುದು ಎಂದರೇನು ? ಗುರುಹಿರಿಯರಿಗೆ ಹೇಗೆ ನಮಿಸಬೇಕು ?

XII. ಈ ಕೆಳಗಿನ ಪ್ರಶ್ನೆಗಳಿಗೆ ಐದು- ಆರು ವಾಕ್ಯಗಳಲ್ಲಿ ಉತ್ತರಿಸಿ.

2X3=6

1. ತಾಯಿಯಾಗುವ ಸಂದರ್ಭದಲ್ಲಿ ಅತ್ತಿಮಬ್ಬೆಯ ಮಹಾ ಬಯಕೆ ಏನಾಗಿತ್ತು ? ಅತ್ತಿಮಬ್ಬೆ ತನ್ನ ಗಂಡನೊಂದಿಗೆ ರಣರಂಗದಲ್ಲಿ ಹೇಗೆ ಹೋರಾಟ ಮಾಡುತ್ತಿದ್ದಳು?
2. ಕುವೆಂಪು ಅವರು ಭಾರತದ ಪ್ರಾಕೃತಿಕ ಸಿರಿಯನ್ನು ಏನೆಂದು ಪರ್ಣಿಸಿದ್ದಾರೆ ?

XIII. ಈ ಕೆಳಗಿನ ಪ್ರಶ್ನೆಗಳಿಗೆ ಯಾರು ಯಾರಿಗೆ ಮತ್ತು ಯಾವ ಸಂದರ್ಭದಲ್ಲಿ ಹೇಳಿದರು.

2X3=6

1. "ಹಣದ ಹಿಂದೆ ಬಿದ್ದವರ ಧಾವಂತವೇ ಇಂತಹದ್ದು"

ಅಥವಾ

"ಅವನು ಗುಂಡೇಟಿನ ಗುರಿಕಾರ"

2. "ಸಂಗೀತಕ್ಕೆ ನನ್ನ ಕೊಡುಗೆ ಅಪಾರ"

ಅಥವಾ

"ಜಾತ್ರೆಯಲ್ಲೇಕೆ ಇಷ್ಟೊಂದು ಅಂಗಡಿಗಳಿವೆ"

XIV. ಕೆಳಗಿನ ಪ್ರಶ್ನೆಗಳಿಗೆ ಏಳು - ಎಂಟು ವಾಕ್ಯಗಳಲ್ಲಿ ಉತ್ತರಿಸಿ.

1X4=4

1. ತರಕಾರಿ ಮೇಳದಲ್ಲಿ ಯಾರು ಯಾರು ಪಾಲ್ಗೊಂಡಿದ್ದರು? ತರಕಾರಿಗಳ ಮೇಳದಿಂದ ಜನರಿಗಾದ ಪ್ರಯೋಜನಗಳೇನು ?

ಅಥವಾ

ಭೀಮರಾಯನ ಹೋರಾಟದ ಗುರಿ ಏನಾಗಿತ್ತು? ಭೀಮರಾಯನು ತನ್ನ ಸೇನಾನಿಗಳಿಗೆ ಏನೆಂದು ಹುರಿದುಂಬಿಸಿದನು ?

XV. ಕೆಳಗಿನ ಪ್ರಶ್ನೆಗಳಿಗೆ ಏಳು - ಎಂಟು ವಾಕ್ಯಗಳಲ್ಲಿ ಉತ್ತರಿಸಿ.

1X4=4

1. ಹಂಸಗಳು ಆಮೆಯನ್ನು ಬಾನಿನಲ್ಲಿ ಒಯ್ಯಲು ಮಾಡಿದ ಉಪಾಯವೇನು ? ಬಾನಿನಲ್ಲಿ ಸಾಗಿದ ಆಮೆಗೆ ಯಾವ ಅನುಭವಗಳಾದವು ?

ಅಥವಾ

ಗುರುವಿನ ಮಹಿಮೆಯನ್ನು ಸರ್ವಜ್ಞ ಕವಿ ಏನೆಂದು ಬಣ್ಣಿಸಿದ್ದಾನೆ ? ಗುರು ಹಿರಿಯರಿಗೆ ನಮಸ್ಕರಿಸುವುದರಿಂದ ಯಾವ ಫಲಗಳು ಸಿಗುತ್ತವೆ ?

2. "ಸಂಗೀತಕ್ಕೆ ನನ್ನ ಕೊಡುಗೆ ಅಪಾರ"

ಅಥವಾ

"ಜಾತ್ರೆಯಲ್ಲೇಕೆ ಇಷ್ಟೊಂದು ಅಂಗಡಿಗಳಿವೆ"

XIV. ಕೆಳಗಿನ ಪ್ರಶ್ನೆಗಳಿಗೆ ಏಳು - ಎಂಟು ವಾಕ್ಯಗಳಲ್ಲಿ ಉತ್ತರಿಸಿ.

1X4=4

1. ತರಕಾರಿ ಮೇಳದಲ್ಲಿ ಯಾರು ಯಾರು ಪಾಲ್ಗೊಂಡಿದ್ದರು? ತರಕಾರಿಗಳ ಮೇಳದಿಂದ ಜನರಿಗಾದ ಪ್ರಯೋಜನಗಳೇನು ?

ಅಥವಾ

ಭೀಮರಾಯನ ಹೋರಾಟದ ಗುರಿ ಏನಾಗಿತ್ತು? ಭೀಮರಾಯನು ತನ್ನ ಸೇನಾನಿಗಳಿಗೆ ಏನೆಂದು ಹುರಿದುಂಬಿಸಿದನು ?

XV. ಕೆಳಗಿನ ಪ್ರಶ್ನೆಗಳಿಗೆ ಏಳು - ಎಂಟು ವಾಕ್ಯಗಳಲ್ಲಿ ಉತ್ತರಿಸಿ.

1X4=4

1. ಹಂಸಗಳು ಆಮೆಯನ್ನು ಬಾನಿನಲ್ಲಿ ಒಯ್ಯಲು ಮಾಡಿದ ಉಪಾಯವೇನು ? ಬಾನಿನಲ್ಲಿ ಸಾಗಿದ ಆಮೆಗೆ ಯಾವ ಅನುಭವಗಳಾದವು ?

ಅಥವಾ

ಗುರುವಿನ ಮಹಿಮೆಯನ್ನು ಸರ್ವಜ್ಞ ಕವಿ ಏನೆಂದು ಬಣ್ಣಿಸಿದ್ದಾನೆ ? ಗುರು ಹಿರಿಯರಿಗೆ ನಮಸ್ಕರಿಸುವುದರಿಂದ ಯಾವ ಫಲಗಳು ಸಿಗುತ್ತವೆ ?



SINDHI HIGH SCHOOL, BENGALURU
ANNUAL EXAMINATION [2023-24]
SUBJECT - SANSKRIT

Name : _____

Roll No: _____

Class/Sec: VII _____

Date: 30.3.2024

No. of sides: 4

Max. Marks: 30

Reading time: 15 mins

Writing Time: 1 hr

GENERAL INSTRUCTIONS:

- Write your Name, Roll number, Section in the answer script.
- Read all the Questions carefully.
- Answer all the Questions and write neatly.
- खण्ड 'क' - अपठित गद्यांश - 6
- खण्ड 'ख' - रचनात्मक कार्यम् - 8
- खण्ड 'ग' - अनुस्यूकृत व्याकरणम् - 7
- खण्ड 'घ' - पाठित गद्यांशम् - 9

खण्ड 'क' - अपठित गद्यांश

I. Read the passage and answer the questions given below. अनुच्छेद पठित्वा प्रश्नानाम् उत्तराणि लिखत ।

अस्माकं देशः अतिविशालः अस्ति । भारते अनेके गिराः सन्ति । तेषु पर्वतेषु केचन पर्वताः अत्युन्नताः सन्ति । हिमालयात् अनेकाः नद्यः प्रवहन्ति । नदीषु गङ्गा श्रेष्ठा पवित्रतमा च मन्यते । इयम् नदी हिमालयात् निःसृत्य बङ्गोपसागरे पतति । गङ्गायाः तटे अनेकानि तीर्थस्थानानि प्राचीननगराणि च सन्ति । वर्षेणैव नद्याः जलेन कृषकाः कृषिकार्यं कुर्वन्ति अत्र च उत्पादयन्ति । अस्माकं देशे जनाः न केवलं कृषिकार्ये जलस्य उपयोगं कुर्वन्ति अपितु नद्याः जलम् पिबन्ति च । अत्र जनाः नद्याः पूजनं अपि कुर्वन्ति ।

A. एकपदेन उत्तरत । Answer in one word.

4 X 4 = 2

1. अस्माकं देशः कीदृशः अस्ति ?

2. अनेके गिरयः कुत्र सन्ति?

3. के नद्याः पूजनं कुर्वन्ति ?

4. गङ्गा कुत्र पतति ?

1 X 2 = 2

B. पूर्णवाक्येन उत्तरत । Answer in complete sentence.

1. वर्षर्तौ नद्याः जलेन कृषकाः किम् कुर्वन्ति?

2. नदीषु गङ्गा कीदृशी मन्यते?

C. यथानिर्देशं उत्तरत

$\frac{1}{2} \times 4 = 2$

1. 'अत्र जनाः नद्याः पूजनं अपि कुर्वन्ति ।

अव्ययपदम् चित्वा लिखत । (अत्र, जनाः, नद्याः, अपि)

2. 'अस्माकं देशः अतिविशालः अस्ति' ।

क्रियापदम् चित्वा लिखत (अस्माकं, देशः, अतिविशालः, अस्ति)

3. 'भारते अनेके गिरयः सन्ति' ।

अत्र कर्तृपदम् किम् (भारते, अनेके, गिरयः, सन्ति)

4. 'पर्वतः' पदस्य पर्यायपदम् चित्वा लिखत ।
(गिरिः, नदी, जलम्, पतति)

खण्ड 'ख' - रचनात्मक कार्यम्

II. Observe the picture and complete the 4 sentences with words given in the helpbox : चित्रम् दृष्ट्वा मञ्जूषायाः पदानि उपयुज्य 4 वाक्यानि पूरयत । 1 x 4 = 4

(नयतः , गृहाणि, क्षेत्रम्, ग्रामस्य)

1. एतत् _____ चित्रम् अस्ति ।
2. महिले जलम् _____ ।
3. ग्रामे _____ सन्ति ।
4. कृषकः _____ कर्षति ।



III. वाक्यानि संस्कृते अनुवादः कुरुत । Translate the sentences into Sanskrit. 1 x 4 = 4

1. I read a book. मै पुस्तक पठ रहा हुं ।

2. She is laughing. वह हसती है ।

3. Two boys eat apple. दो बालक सेब खाते है ?

4. You are a good girl. तुम उत्तम बालिका हो ।

खण्ड 'ग' - अनुप्रयुक्त व्याकरणम्

IV. उचित - विभक्तिरूपैः रिक्तस्थानानि पूरयत

$\frac{1}{2} \times 6 = 3$

Fill in the blanks with the appropriate noun forms.

1. बालकः _____ कवितां लिखन्ति । (कलमैः, कलमेन, कलमाभ्याम्)
2. फलानि _____ पतन्ति । (वृक्षात्, वृक्षाभ्याम्, वृक्षेभ्यः)
3. कृषकाः _____ जलेन क्षेत्राणि सिञ्चन्ति । (नदीम्, नद्याः, नदीभ्यः)
4. _____ मार्गे चलतः । (बालिका, बालिके, बालिकाः)
5. _____ नमः । (शिवं, शिवाय, शिवे)
6. रामः _____ सह वनम् अगच्छत् । (सीता, सीतया, सीतायाः)

V. प्रश्ननिर्माणम् कुरुत ।

Make questions.

$\frac{1}{2} \times 4 = 2$

1. श्रीकृष्णः गोकुले आसीत् । (कुत्र, कति, कथम्) _____
2. तुलसीकषायस्य सेवनेन चर्मव्याधयः नश्यन्ति । (कस्याः, कस्मिन्, कस्य) _____
3. सन्तुष्ट भगवान् ध्रुवाय ध्रुवपदं प्रायच्छत् । (कस्मै, कया, कम्) _____
4. सुरुचिः नृपस्य प्रियतरा आसीत् । (कति, का, कैः) _____

VI. इतरवचन पदानि लिखत ।

½ X 4 = 2

Fill in the blanks with singular, dual or plural words as required.

एकवचनम्

द्विवचनम्

बहुवचनम्

1. अस्ति स्तः _____
2. अपठम् अपठाम _____
3. खेलसि _____ खेलथ
4. _____ आगच्छाम आगच्छाम

खण्ड 'घ' - पठितावबोधनम्

VII. Read the passage and answer the questions given below

गद्यांशम् पठित्वा अधोदत्तान् प्रश्नान् उत्तरत ।

एकस्य ग्रामस्य नाम ऋष्यशृङ्गपुरम् अस्ति । अस्य नामान्तरं 'किग्ग' इति । अयं शृङ्गेरीतः दशकिलोमीटर् दूरे अस्ति । अत्र विभाण्डकपुत्रस्य ऋष्यशृङ्गस्य देवालयः अस्ति । ऋष्यशृङ्गः 'वृष्टिदेवः' इत्येव प्रसिद्धः । चैत्रे मासे देवस्य रथोत्सवः भवति । शिवलिङ्गस्य उपरि शृङ्गद्वयं विराजते । देवस्य वामतः विराजतेतस्य पत्नी शान्ता । तस्य दक्षिणतः द्विभुजः गणपतिः अस्ति । देवस्य पुरतः नन्दी विराजते ।

ग्रामसमीपे कश्चन पर्वतः अस्ति । पर्वतस्य नाम नृसिंहपर्वतः इति । पर्वतात् पञ्चनद्यः उद्भवन्ति । अत्र सरोवरद्वयं अपि वर्तते ।

A एकपदेन उत्तरत । Answer in one word.

½ X 4 = 2

1. ऋष्यशृङ्गपुरे कस्य देवालयः अस्ति? _____
2. देवस्य पुरतः कः विराजते? _____
3. देवस्य दक्षिणतः कः अस्ति? _____
4. ग्रामसमीपस्य पर्वतस्य नाम किम्? _____

B. पूर्णवाक्येन उत्तरत । Answer in complete sentence.

1 X 2 = 2

1. ऋष्यशृङ्गपुरम् शृङ्गेरीतः कति किलोमीटर् दूरे अस्ति ?

2. ऋष्यशृङ्गस्य पत्नी का ?

C. यथानिर्देशं उत्तरत

$\frac{1}{2} \times 2 = 1$

1. गद्यांशात् 'दूरे' पदस्य विरुद्धार्थकपदं चित्वा लिखत ?

() चैत्रे, मासे, समीपे (

2. 'तस्य दक्षिणतः द्विभुजः गणपतिः अस्ति' वाक्यात् क्रियापदं चित्वा लिखत?

() दक्षिणतः, गणपतिः, अस्ति (

VIII. समानार्थकपदं / विरुद्धार्थकपदं लिखत ।

$\frac{1}{2} \times 8 = 4$

Write the Synonyms / Antonyms

A. समानार्थकपदं लिखत | Write the Synonyms

1. जलम् = _____ 2. निकषा = _____

3. पुत्रः = _____ 4. भार्या = _____

B. विरुद्धार्थकपदं लिखत | Write the Antonyms

1. उपरि x _____ 2. कठिनम् x _____

3. अशुद्धम् x _____ 4. नास्ति x _____



SINDHI HIGH SCHOOL, BENGALURU
ANNUAL EXAMINATION [2023-24]
SUBJECT - Additional Hindi



Name : _____

Roll No: _____

Class/Sec: VII _____

Date: 28.3.2024

No of sides: 4

Max. Marks: 30

Reading time: 15 mins

Writing Time: 1 hr

GENERAL INSTRUCTIONS:

- Write your Name, Roll number, Section in the answer script.
- Read all the Questions carefully.
- Answer all the Questions and write neatly.

खंड - क

1. निम्नलिखित गद्यांश को ध्यानपूर्वक पढ़कर प्रश्नों के सही उत्तर वाले विकल्प चुनिए
(1x5=5)

एक वृद्ध महिला रेल गाड़ी से सफ़र कर रही थी। खिड़की के पास बैठकर, बीच-बीच में अपनी मुट्ठी से कुछ बाहर फेंकती जा रही थी। सहयात्री ने पूछा, "यह आप क्या कर रही हैं?" वह महिला ने जवाब दिया, "यह सुंदर फलों और फूलों के बीज हैं। मैं उन्हें इस उम्मीद से फेंक रही हूँ कि इनमें से कुछ भी अगर जड़ पकड़ ले तो लोगों को इनसे कुछ फ़ायदा होगा।" पता नहीं मैं इस रास्ते से फिर गुज़रूँ या ना गुज़रूँ इसलिए क्यों न मैं इस अवसर का उपयोग कर लूँ?"

क) रेल गाड़ी में कौन सफ़र कर रही थी ?

- i. भिखारिन ii. अधिकारी iii. अभिनेत्री iv. वृद्ध महिला

ख) वृद्ध महिला कोई चीज़ अपनी मुट्ठी से कहाँ फेंक रही थी?

- i. गाड़ी से बाहर ii. गाड़ी के भीतर iii. छत पर iv. फ़र्श पर

ग) "यह आप क्या कर रही हैं?" किसने किस से पूछा?

- i. वृद्धा से सहयात्री ने ii. वृद्धा ने लड़की से iii. सहयात्री ने वृद्ध से iv. युवती से सहयात्री ने

घ) वृद्ध महिला सुंदर फलों और फूलों के बीज किनके फायदे के लिए फेंक रही थी?

- i. पात्रियों के ii. संबंधियों के iii. लुटेरों के iv. लोगों के

उ.) उस रास्ते से गुज़रना या ना गुज़रना वृद्धा के लिए क्या था?

- i. अनिश्चित ii. निश्चित iii. असंभव iv. स्वभाविक

खंड - ख

ii (क) दिए गए शब्दों के दो-दो पर्यायवाची शब्द लिखें।

(1X2=2)

(i) दिन —————

(ii) चंद्र —————

(ख) निम्नलिखित शब्दों के विलोम शब्द लिखें।

(½ X4=2)

(i) पुण्य x —————

(iii) लघु x —————

(ii) जय x —————

(iv) स्नेह x —————

(ग) नीचे दिए गए तद्भव शब्दों के तत्सम रूप लिखें

(½ X4=2)

(i) सौँच —————

(ii) पहर —————

(iii) भगत —————

(iv) मूरति —————

घ) दिए गए शब्दों का वर्ण-विच्छेद कीजिए।

(1 X2=2)

(i) गरदन —————

(ii) चिनगारी —————

(इ) अनेकार्थी शब्दों के दो दो अर्थ लिखें ।

(i) लोक— _____, _____

(½ X4=2)

(i) जल— _____, _____

खंड-ग

3. दिए गए प्रश्नों के उत्तर पर (✓) का निशान लगाओ।

(1x8=8)

क. कवि स्वतंत्रता सेनानियों के प्रति नमन किससे प्रकट कर रहे हैं ?

i. ताक़त से

ii. वाणी से

iii. हथियार से

iv. क़लम से

ख. किनके सिंहनाद से सहमकर धरती अब तक डोल रही है ?

i. अंग्रेजों के

ii. देश भक्तों के

iii. नेताओं के

iv. शत्रुओं

के

ग. माता यशोदा प्रातःकृष्ण को कहाँ भेज देती थी?

i. गाय चराने

ii. पौधे लगाने

iii. बकरियाँ चराने

iv. हल जोतने

घ. राम एवं उनके भाई अपनी माताओं से क्या माँग रहे हैं ?

i. सूर्य

ii. तारे

iii. चंद्रमा

iv. आकाश

ङ. झोपड़ी का वातावरण कैसा था ?

i. शांतिपूर्ण

ii. दुर्गंधपूर्ण

iii. भयपूर्ण

iv. खुशबूदार

च. "बेटा यह मनुष्य नहीं देवता है। बूढ़ी स्त्री ने ये बात किससे कही ?

i. अपनी बेटी

ii. अपने पति से

iii. अपनी पड़ोसन से

iv. अपने बेटे से

छ. दोनों मित्रों ने साथ साथ कहाँ की तीर्थ यात्रा करने की प्रतिज्ञा की?

i. कोपेनहेग

ii. यरूशलम

iii. मॉस्को

iv. बगदाद

ज. गिरजाघर के भीतर कितने दीपक चल रहे थे?

i. छत्तीस

ii. पच्चीस

iii. पंद्रह

iv. ग्यारह

4.क) नीचे लिखे प्रश्नों के उत्तर एक वाक्य में दें

1x3=3

i. देश भक्तों ने किसकी चिंगारी छिटाकई ?

.....

ii. मीरा बाई ने नंदलाल कहकर किसो पुकारा ?

.....

iii. राम एवं उसके भाई किसका प्रतिबिंब देखकर डर जाते हैं ?

.....

ख. दिए गए प्रश्नों के उत्तर दो- तीन वाक्य में दें।

(2x2=4)

(i) एफ़िम झोपड़ी में क्यों नहीं रुका ? एलिशा ने क्या निर्णय लिया ?

.....

.....

(ii) प्रस्तुत प्रणति कविता के कवि कौन है उन्होंने किन्हें प्रणाम किया?

.....

.....



SINDHI HIGH SCHOOL, BENGALURU

Annual Examination 2023-24

Subject Mathematics

Class 7

Date: 23/3/2023

No. of printed sides: 5

Max marks: 80

Reading time: 8 to 8:15am

Writing time is 8:15 to 11:15am

GENERAL INSTRUCTIONS

All questions are compulsory.

Part - A consists of 20 MCQ's carrying 1 mark each.

Part - B consists of 5 short answer questions carrying 2 marks each

Part - C consists of 6 short answer questions carrying 3 marks each

Part - D consists of 4 questions carrying 5 marks each

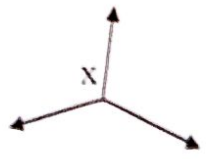
Part - E consists of 3 case study questions carrying 4 marks each

PART A

20X1=20

- The property used in $a \times (b+c) = (a \times b) + (a \times c)$ is _____.
 - Commutative property
 - Associative property
 - Closure property
 - Distributive property
- Product of two integers is 256, if one of them is -8 , then the other is _____.
 - 32
 - -32
 - 248
 - -264
- Regular octagon has _____ lines of symmetry.
 - 4
 - 9
 - 6
 - 8
- If two sides of a triangle are not equal, the triangle is called _____ triangle.
 - Scalene
 - Isosceles
 - Equilateral
 - Right angled triangle
- Which of the following cannot be the sides of a right triangle?
 - 2cm, 2cm, 4cm
 - 5cm, 12cm, 13cm
 - 6cm, 8cm, 10cm
 - 3cm, 4cm, 5cm
- The sum of $\frac{5}{4} + \frac{(-25)}{4} =$ _____.
 - -5
 - 5
 - 4
 - -4
- If $\frac{p}{q}$ and $\frac{r}{s}$ are equivalent rational numbers, then
 - $p = r$ and $q = s$
 - $ps = qr$
 - $p + r = q + s$
 - $pq = rs$

8. Perimeter of a semi-circle is _____.
- a. $\frac{1}{2} \pi r^2$ b. $\pi r + d$ c. πr d. $3 \pi r^2$
9. $12\frac{1}{2}\%$ of 200 is _____.
- a. 25 b. 12 c. 40 d. 100
10. The value of $(-27) \times (-16) + (-27) \times (-14)$ is _____.
- a. -1110 b. -810 c. 810 d. 1110
11. The angle of rotation of an isosceles triangle is _____.
- a. 120° b. 270° c. 180° d. 360°
12. A/an _____ connect a vertex of a triangle to the midpoint of the opposite side.
- a. altitude b. median c. vertex d. none of the these
13. The ratio of the area of a circle to the area of a semicircle is _____.
- a. 1:2 b. 2:1 c. 4:1 d. 1:4
14. If the sides of a square are halved then its area is _____.
- a. one fourth b. doubles c. becomes half d. remains same
15. Out of 32 students, 8 are absent. What % of the students are present?
- a. 50% b. 10% c. 25% d. 75%
16. Which is greater?
- a. $(-8) + (-4)$ b. $(-8) - (-4)$ c. $8 - (-4)$ d. $(+8) + (-4)$
17. The rotational symmetry of order of '8' is _____.
- a. 2 b. 1 c. 0 d. 4
18. The order of the rotational symmetry of the following figure about the point marked X is _____



- a. 1 c. 3
b. 2 d. 4

19. Assertion: The triangle is possible to form by three line segments of lengths 10cm, 12cm, 13cm.

Reason : The sum of any 2 sides of a triangle is less than the third side.

- Both assertion and reason are correct and reason is the correct explanation of assertion.
- Both assertion and reason are correct but reason is not the correct explanation of assertion.
- Assertion is correct but reason is incorrect.
- Assertion is incorrect but reason is correct.

20. Assertion: 62.8cm is the circumference of a circle of diameter 28cm.

Reason: Circumference of a circle is πd .

- Both assertion and reason are correct and reason is the correct explanation of assertion.
- Both assertion and reason are correct but reason is not the correct explanation of assertion.
- Assertion is correct but reason is incorrect.
- Assertion is incorrect but reason is correct.

PART B

5X2=10

21. Draw any two English alphabets which has no line of symmetry.

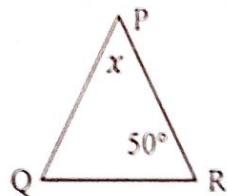
22. Represent $\frac{-5}{7}$ on a number line.

23. Simplify the following expressions and then find the numerical value for $x = -2$.

$$3(2x - 4) + x^2 + 5$$

24. The perimeter of a square is 24cm. Find its area.

25. Find the value of x in the given ΔPQR , $PQ=PR$.



PART C

6X3=18

26. Subtract the sum of $\frac{-5}{6}$ and $-1\frac{3}{5}$ from the sum of $2\frac{2}{3}$ and $-6\frac{2}{5}$.
27. Radhika borrowed ₹12,000 from her friends, out of which ₹4,000 were borrowed at 18% and the remaining at 15% rate of interest P.A. What is the total interest after 3 years?
28. Check if the measures 2.5cm, 4.2cm and 8cm forms the sides of a triangle.
29. Find the value of $x^3 - 3x^2y + 2xy^2 + 8xy + 9$ for $x=1$ and $y=2$.
30. From a circular sheet of radius 4cm, a circle of radius 3cm is removed. Find the area of the remaining sheet. Take ($\pi = 3.14$)
31. Find the simple interest on ₹2400 at $5\frac{1}{2}\%$ per annum for 4 years.

PART D

4X5=20

32. Find the length of the diagonal of
- A Rectangle whose sides are 16cm and 12cm.
 - Find the perimeter of the above rectangle.
33. At what rate percent per annum will ₹3600 amount to ₹4734 in $3\frac{1}{2}$ years?
34. The adjacent sides of a parallelogram are 15cm and 8cm. If the perpendicular distance between the longer sides is 4cm.
- Find the area of the parallelogram.
 - Find the distance between the shorter distance.
- 35a. Express 75% as
- Decimal
 - Fraction
 - Ratio
- b. What is 25% of 249

PART E

3X4-12

Case Study

36. Horizon Glacier is a cold place. The average temperature of the place is less than zero.



The maximum and minimum temperature (in °C) recorded for seven days in a week are given below.

Sun		Mon		Tue		Wed		Thu		Fri		Sat	
max	min	max	min	max	min	max	min	max	min	max	min	max	min
-13,	-23	-13,	-24	-14,	-24	-13,	-22	-15,	-23	-14,	-23	-12,	-21

- a. What was the lowest temperature recorded in the week?
- b. The average maximum temperature of Horizon Glacier for the week was -13.5°C . On which days was the maximum temperature greater than the average maximum temperature?
- c. What is the difference between the maximum and minimum temperature on Friday?

37. In a class, a teacher gives few terms and asks the children to group the terms as follows.

- a. Write the numerical coefficient of $\frac{-4}{5}x^2y$
- b. Classify the following into monomials, binomials and trinomials.
 - i. $-6x^2 + 5x - 3$
 - ii. $\frac{-3}{2}x - y$
 - iii. -8
 - iv. $+2y + 7y - 6y$



c. Write in algebraic expression:- One half of the sum of numbers x and y added to 27.

38. The distance between two stations A and B is $3\frac{2}{5}$ km, that of B and C is $6\frac{2}{5}$ km, and that of C and D is $5\frac{1}{5}$ km. The stations are in a straight line as shown in the given figure.



- a. Find the distance between A and C.
- b. If she covers a distance of $2\frac{1}{2}$ km from A, then how much distance is she away from D?
- c. If Ritu went from A to D and returned on the same path, find the total distance she covers.



✓

SINDHI HIGH SCHOOL, BENGALURU
ANNUAL EXAMINATION [2023-24]
SUBJECT: SOCIAL SCIENCE

Class: VII
Date: 21.3.2024
No of Sides: 6

Max Marks: 80
Reading Time: 15 mins
Writing Time: 2 hrs 45 mins

GENERAL INSTRUCTIONS:

- i. Question paper comprises Six Sections – A, B, C, D, E and F There are 37 questions in the question paper. All questions are compulsory.
- ii. Section A - From question 1 to 20 are MCQs of 1 mark each.
- iii. Section B-Question no 21 to 24 are Very Short Answer Type Questions, carrying 2 marks each. Answer to each question should not exceed 40 words.
- iv. Section C contains Q 25 to Q 29 are Short Answer Type Questions, carrying 3 marks each. Answer to each question should not exceed 60 words.
- v. Section D-Question no. 30 to 33 are long answer type questions carrying 5 marks each. Answer to each question should not exceed 120 words.
- vi. Section-E- Questions no from 34 to 36 are case based questions with three sub questions and are of 4 marks each.
- vii. Section F-Question no. 37 is map based, carrying 5 marks with two parts, 37a. from History (2 marks) and 37b. from Geography (3 marks).
- viii. There is no overall choice in the question paper. However, an internal choice has been provided in few questions. Only one of the choices in such questions have to be attempted.
- ix. In addition to this, separate instructions are given with each section and question, wherever necessary.

SECTION -A										
Choose the best option-		1x20=20								
1.	Paiks were the _____ (a) Landlords (b) Itinerants (c) Nomads (d) Forced labour	(1)								
2.	The Domestic Violence Act was passed in the year _____ (a) 2014 (b) 2006 (c) 2016 (d) 2004	(1)								
3.	Bromeliads are special plants that store water in their _____ (a) Stems (b) Roots (c) Leaves (d) Branches	(1)								
4.	Which of the following layer of the atmosphere is free from the clouds? (a) Stratosphere (b) Troposphere (c) Mesosphere (d) Inosphere	(1)								
5.	Match the following <table border="1" style="width: 100%;"><tbody><tr><td>1. Bedouins</td><td>i. Monastery</td></tr><tr><td>2. Lamayuru</td><td>ii. Shastoosh</td></tr><tr><td>3. Oasis</td><td>iii. Sahara</td></tr><tr><td>4. Chiru</td><td>iv. Depression with water</td></tr></tbody></table> (a) 1- ii, 2-iv, 3 -iii, 4- i (b) 1- iii, 2-i, 3-iv, 4-ii (c) 1-iv, 2 -ii, 3-iii, 4-iv (d) 1-i, 2-iii, 3-iv, 4-ii	1. Bedouins	i. Monastery	2. Lamayuru	ii. Shastoosh	3. Oasis	iii. Sahara	4. Chiru	iv. Depression with water	(1)
1. Bedouins	i. Monastery									
2. Lamayuru	ii. Shastoosh									
3. Oasis	iii. Sahara									
4. Chiru	iv. Depression with water									
6.	The Mughal forces under _____ attacked Garha Katanga. (a) Asaf Khan (b) Mir Jumla (c) Aman Das (d) Allauddin Khalji	(1)								

7.	Rashoundari Devi was born in _____ (a) Maharashtra (b) Tamil Nadu (c) West Bengal (d) Kerala	(1)
8.	Every year on 14 th August, people gather at _____ border (a) Rann of Kutch (b) Wagah (c) Kargil (d) Gilgit	(1)
9.	Match the following 1. Kabir Das i. Gujarat 2. Narai Mehta ii. Uttar Pradesh 3. Basavanna iii. Maharashtra 4. Narsdev iv. Karnataka (a) 1-ii, 2-i, 3-iv, 4-iii (b) 1-ii, 2-iv, 3-i, 4-iii (c) 1-iv, 2-ii, 3-iii, 4-iv (d) 1-iii, 2-iv, 3-i, 4-ii	(1)
10.	Ranveer Singh Bhavnani was born on _____ (a) 16 th July 1975 (b) 6 th July 1985 (c) 18 th July 1995 (d) 8 th July 1905	(1)
11.	Khabar Lahriya is a _____ (a) journal (b) Magazine (c) Local Newspaper (d) News Channel	(1)
12.	Find the incorrect statement(s) (A) Sawar Raja Jai Singh constructed astronomical observatories in Mathura. (B) Raja Ajit Singh of Jodhpur held the governorship of Gujarat. (C) Nagaur was conquered and annexed to the house Jodhpur. (D) Raja Jai Singh founded his new capital at Agra. (a) A, B (b) A, D (c) only A (d) only D	(1)
13.	Which is an example of Mass Media? (a) Internet (b) Mobile (c) Letter (d) Telephone	(1)
14.	On 26 th December 2004, the waves moved from earthquake epicenter located in _____ (a) Andaman Nicobar (b) India (c) Sumatra (d) Sri Lanka	(1)
15.	Name the place which recorded highest temperature of 57.7 degree Celsius. (a) Tafilalet (b) Al-Azizia (c) Phalodi (d) Chad	(1)
16.	Schedule Tribe in India is an official term for the _____ (a) Dalit (b) rich people (c) poor people (d) Adivasis	(1)
17.	Laxmi Lakra is from a poor tribal family in _____ (a) West Bengal (b) Jharkhand (c) Bihar (d) Orissa	(1)
18.	Tannanna made her first Telugu movie debut in _____ (a) Syntaa Narasimha Reddy (b) Oopari (c) Sri (d) Bahubali	(1)
19.	The Government has set up _____ child care centres in several villages in the country (a) Anganwadis (b) Health centre (c) Vidyalyaya (d) Creche	(1)
20.	The powerful warrior families who supported Maratha were _____ (a) Deshmukhs (b) Kumbhs (c) Peshwas (d) Garkwads	(1)
SECTION - B		
Q. no. 21 to 24 are very short answer questions		2x4=8
21.	Media plays an important role in a democracy. Justify the statement.	(2)
22.	Mention any two reasons for the depletion of rainforests.	(2)
23.	What are ocean currents? Give an example of cold current and warm current.	(2)
24.	What is an Independent media?	(2)

SECTION - E

Q. 34 to 36 are Case - Based questions

4x3=12

34.	<p>Read the extract and answer the following questions.</p> <p>Costa Rica is considered to be one of the healthiest countries. The main reason for this can be found in the Costa Rican Constitution. Several years ago, Costa Rica took a very important decision which helped the Costa Rican government. The government believes that a country has to be healthy for its development and pays a lot of attention to the health of its people. The Costa Rican government provides basic services and amenities to all the Costa Ricans.</p> <ol style="list-style-type: none"> In which continent is Costa Rica situated? What was the decision taken by the Costa Rican government to improve the health of the people? What are the basic services and amenities provided by the Costa Rican government to all the Costa Ricans? 	(1) (1) (2)
35.	<p>Read the extract and answer the following questions.</p> <p>The Ganga-Brahmaputra plain has several big towns and cities. The wastewater from these towns and industries is discharged into the rivers. This leads to the pollution of the rivers. All the four ways of transport are well developed in the Ganga-Brahmaputra basin. In the plain areas the roadways and railways transport the people from one place to another.</p> <ol style="list-style-type: none"> Name any two cities located on the river Ganga. Mention the programme initiated by the government of India to conserve the river Ganga. Paddy is grown in the Ganga-Brahmaputra plains. Give reasons. 	(1) (1) (2)
36.	<p>Read the extract and answer the following questions.</p> <p>Towards the end of the 17th century a powerful state started emerging in the Deccan under the leadership of Shivaji which finally led to the establishment of the Maratha state. He was born to Shahji and Jijabai at Shivneri in 1630. Shivaji embarked on a career of conquest at a young age. His exploits against the forces of Bijapur and the Mughals made him a legendary figure by introducing an efficient administrative system supported by a revenue collection method.</p> <ol style="list-style-type: none"> Under whose guidance did Shivaji embark on a career of conquest? What made him the undisputed leader of the <u>Mavala</u> Highlands? Explain the revenue collection system of the <u>Maratha</u> kingdom. 	(1) (1) (2)

SECTION 4

Map based questions:

(10-10)

1) Identify the places marked on the political map of India with the help of given clues.

(2)

(i) Nadir Shah attacked the city in 1739

(ii) Aham route originated from Ahyamur to this place.

2) On the given map of Africa mark the following.

(5)

(i) Maurit

(ii) Libya

(iii) Sudan



SINDHI HIGH SCHOOL, BENGALURU.
ANNUAL EXAMINATION (2023-24)
SUBJECT: SCIENCE

CLASS: VII
DATE: 19/3/2024
NO OF PRINTED SIDES: 08

MAX MARKS: 80
READING TIME: 8.00 to 8.15am
WRITING TIME: 8.15 to 10.45am

GENERAL INSTRUCTIONS:

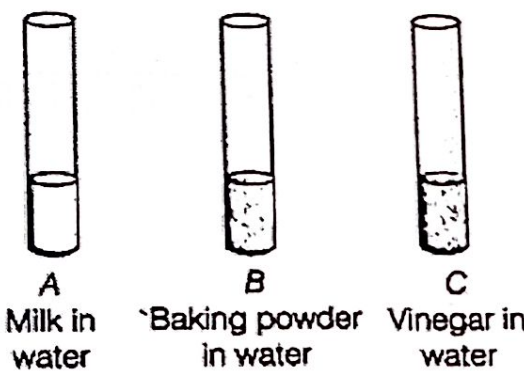
- i. This question paper consists of 39 questions in 5 sections.
- ii. All questions are compulsory.
- iii. Section A consists of 20 objective-type questions carrying 1 mark each.
- iv. Section B consists of 6 Very Short questions carrying 02 marks each. Answers to these questions should be in the range of 30 to 50 words.
- v. Section C consists of 7 Short Answer type questions carrying 03 marks each. Answers to these questions should be in the range of 50 to 80 words.
- vi. Section D consists of 3 Long Answer type questions carrying 05 marks each. Answers to these questions should be in the range of 80 to 120 words.
- vii. Section E consists of 3 source-based/case-based assessment units of 04 marks each with sub-parts.

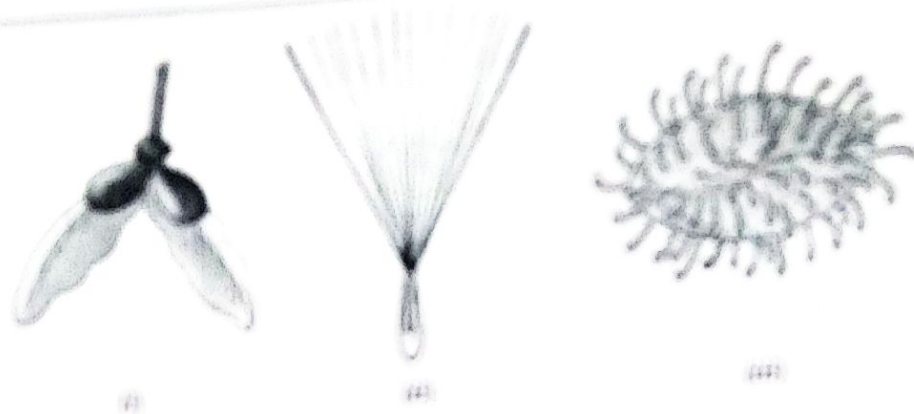
S NO.	QUESTIONS	MARKS
	SECTION A	
	Select and write the most appropriate option out of the four options given for each of the questions 1 – 20.	
1	Which of the following is an acid-base indicator? a) Vinegar b) Lime water c) Turmeric d) Baking soda	1
2	Neutralisation reaction is a a) physical and reversible change b) physical change that cannot be reversed c) chemical and reversible change d) chemical change that cannot be reversed	1

3	<p>When a man with stomach pain went to the doctor, the physician identified acidity. Which of the following would be the suitable remedy for him?</p> <p>a) Lemonade drink b) Milk of magnesia. c) Aerated drink d) Vinegar</p>	1										
4	<p>Which of the following is a part of inorganic impurities of the sewage?</p> <p>a) Pesticides b) Urea c) Phosphates d) Vegetable waste</p>	1										
5	<p>The valency of Oxygen is</p> <p>a) 3 b) 2 c) 1 d) 4</p>	1										
6	<p>Which of the following is wastewater?</p> <p>a) Water coming out of a shower. b) Water coming out of the laundry. c) Water flowing in the river. d) Water trickling from a leaky tap</p>	1										
7	<p>The tree that helps in wastewater treatment by absorbing water greatly from the soil and releasing pure water in environment through transpiration is</p> <p>a) peepal b) Mango c) eucalyptus d) banana</p>	1										
8	<p>Match the names of organisms in column I with their organs of breathing given in column II.</p> <table border="1" style="margin-left: auto; margin-right: auto;"> <thead> <tr> <th style="text-align: center;">Column I</th> <th style="text-align: center;">Column II</th> </tr> </thead> <tbody> <tr> <td>(a) Butterfly</td> <td>(i) Lungs</td> </tr> <tr> <td>(b) Earthworm</td> <td>(ii) Gills</td> </tr> <tr> <td>(c) Sparrow</td> <td>(iii) Spiracles</td> </tr> <tr> <td>(d) Fish</td> <td>(iv) Skin</td> </tr> </tbody> </table> <p>a) (a)—(iii), (b)—(iv), (c)—(i), (d)—(ii) b) (a)—(ii), (b)—(iv), (c)—(i), (d)—(iii) c) (a)—(i), (b)—(iv), (c)—(iii), (d)—(ii) d) (a)—(iv), (b)—(iii), (c)—(i), (d)—(ii)</p>	Column I	Column II	(a) Butterfly	(i) Lungs	(b) Earthworm	(ii) Gills	(c) Sparrow	(iii) Spiracles	(d) Fish	(iv) Skin	1
Column I	Column II											
(a) Butterfly	(i) Lungs											
(b) Earthworm	(ii) Gills											
(c) Sparrow	(iii) Spiracles											
(d) Fish	(iv) Skin											

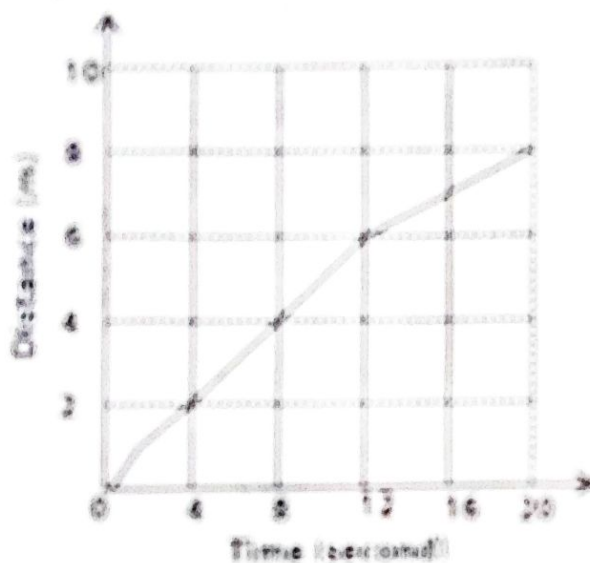
9	<p>Which of the following activities are characterized by minimum breathing rate?</p> <p>a)Dancing b)Sleeping c)cleaning the floor d)Washing the clothes</p>	1
10	<div data-bbox="220 414 758 884" data-label="Image"> </div> <p>Identify the asexual reproduction shown in the given picture.</p> <p>a) spore formation b) fragmentation c) budding d) binary fission</p>	1
11	<p>Normal range of breathing rate per minute in an average adult person at rest is times per minute.</p> <p>a) 15-18 times b) 20-25 times c) 25-30 times d) 10-15 times</p>	1
12	<p>Which of the following statements is/are true for sexual reproduction in plants?</p> <p>(i) Plants are obtained from seeds. (ii) Two plants are always essential. (iii) Fertilization can occur only after pollination. (iv) Only insects are agents of pollination.</p> <p>a) (i) and (iii) b) (i) only c) (ii) and (iii) d) (i) and (iv)</p>	1

13	Which of the following is based on the study of the shadow cast by the sun? a) Simple pendulum b) Atomic clock c) Sun dial d) Quartz clock	1
14	The image that cannot be obtained on a screen is called a) real image b) virtual image c) diminished image d) enlarged image	1
15	Which of the products are not obtained from forest? a)Ginger b)Catechu c)Honey d)Gum	1
16	Seeping of rain water takes place in a)canopy b)understorey c)forest floor d)crown	1
	Note: In the following questions 17 to 20, a statement of Assertion is followed by a statement of Reasoning. Choose the correct answer from the following options. (a) Both assertion and reason are correct statements, and reason is the correct explanation for assertion. (b) Both assertion and reason are correct statements but reason is not the correct explanation for assertion. (c) Assertion is correct, but reason is the wrong statement. (d) Assertion is wrong, but reason is the correct statement.	
17	Assertion (A): HCl is acidic in nature. Reason (R): It reacts with a base to form salt and water.	1
18	Assertion (A): Vegetative propagation is a method of asexual reproduction in plants. Reason (R): In asexual reproduction new plants are obtained without use of seed.	1
19	Assertion (A): The various components of the forest are interdependent on one another Reason(R): The forest keeps on growing and changing and can regenerate.	1
20	Assertion (A): Plane mirror is used in torch lights . Reason (R): Plane mirrors always form an image of equal size, an erected image .	1

Section B		
21	Write the cations and anions for the given elements. i. Hydride ii. Carbonate iii. Magnesium iv. Boron	2
22	How do plants respire?	2
23	Forests are called lungs of the earth? Give reason.	2
24	A simple pendulum takes 20s to complete 42 oscillations. What is the time period of the pendulum?	2
25	Two different types of lenses are placed on a sheet of newspaper. How will you identify them without touching?	2
26	Why do we feel muscle cramps after heavy exercise?	2
Section C		
27	Look at the figure which shows solutions taken in test tubes A, B and C. What colour is expected, when a piece of red litmus paper is dropped in each test tube? Mention the nature of the solution after performing the test. <div style="text-align: center;">  <p style="margin-left: 100px;">A B C</p> <p style="margin-left: 100px;">Milk in Baking powder Vinegar in</p> <p style="margin-left: 100px;">water in water water</p> </div>	3
28	Draw an atomic structure of Silicon. Mention its atomic number, mass number and electronic configuration.	3
29	Identify the seeds given below and mention the means of dispersion.	3



10. Figure given below is the distance-time graph of the motion of an object.



- What will be the position of the object at 20 s?
- What will be the distance travelled by the object in 12 s?
- What is the average speed of the object?

11. Nutrients are recycled and nothing goes waste in the soil ecosystem.

12. Assume, a person is standing in front of a plane mirror. The distance between the mirror and his image is 4 m. If the person moves 2 m, towards the plane mirror, what would be the distance between the person and his image and why?

Answer any 2 ques of a convex mirror.

13. Draw the distance-time graph for the motion in the following cases.

- A car moving with a constant speed.
- A car parked on a side road.

Section D

34

A. Different stages/steps of a WWTP is given below. Arrange them in correct order.

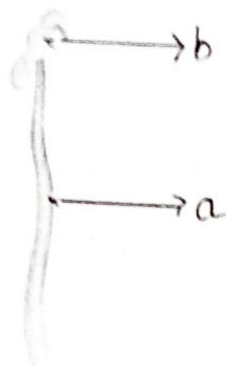
Aeration tank, grit and sand removal tank, settling tank, bar screen
 (a) Arrange all the above steps in the correct order in which they occur in the sewage treatment plant.

(b) Which step gives most of the sludge?

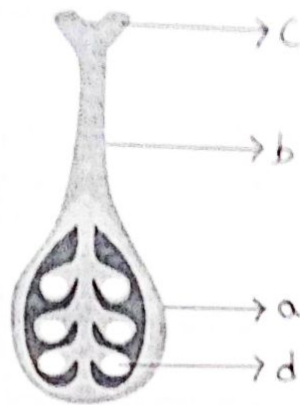
B. Outline your role as an active citizen in relation to sanitation in public places.

5

35



A



B

a) Identify the given picture A and B and label the parts

b) Define zygote.

5

36

a. The given data regarding the motion of an object C is given in a tabular form. Draw a distance-time graph using given data.

Time	9:30 am	9:45 am	10:00 am	10:15 am	10:30 am
Distance traveled	10m	20m	30m	40m	50m

b. Differentiate between uniform and non-uniform motion.

5

Section E

37

Nitesh was playing with his friends in the garden. Suddenly, Nitesh was stung by a honeybee and was in great pain. Immediately, his friends call his mother. She applied baking soda solution on the affected area and then took him to the doctor. Read the above passage and answer the following questions:

(a) What could be the reason for this burning pain?

(b) Why did his mother apply baking soda solution on the affected area?

(c) Farmers have to treat the soil before sowing seeds. Justify.

4

38	<p>A food stall owner was preparing dough for making bhaturas. He added a pinch of yeast and sugar to the dough and left it in a warm place. After a few hours, the dough had risen. There was a sour smell too.</p> <p>a) Why did the dough rise? b) Why did the dough smell sour? c) Why was sugar added to the dough? d) What would have happened if the dough was kept in the refrigerator, soon after it was prepared?</p>	4
39	<p>Namit was driving a car and suddenly became aware of a loud sound coming from behind. He looked through his rear view mirror and saw an ambulance. He recalled reading that such emergency vehicles often have their name written in the mirror (AMBULANCE) or writing, i. e. ƎOИAJU8MA.</p> <p>a) Which mirror is used as a rear view mirror? Give a reason. b) Explain the term lateral inversion. c) State any two characteristics of the image formed by the above mirror.</p>	4